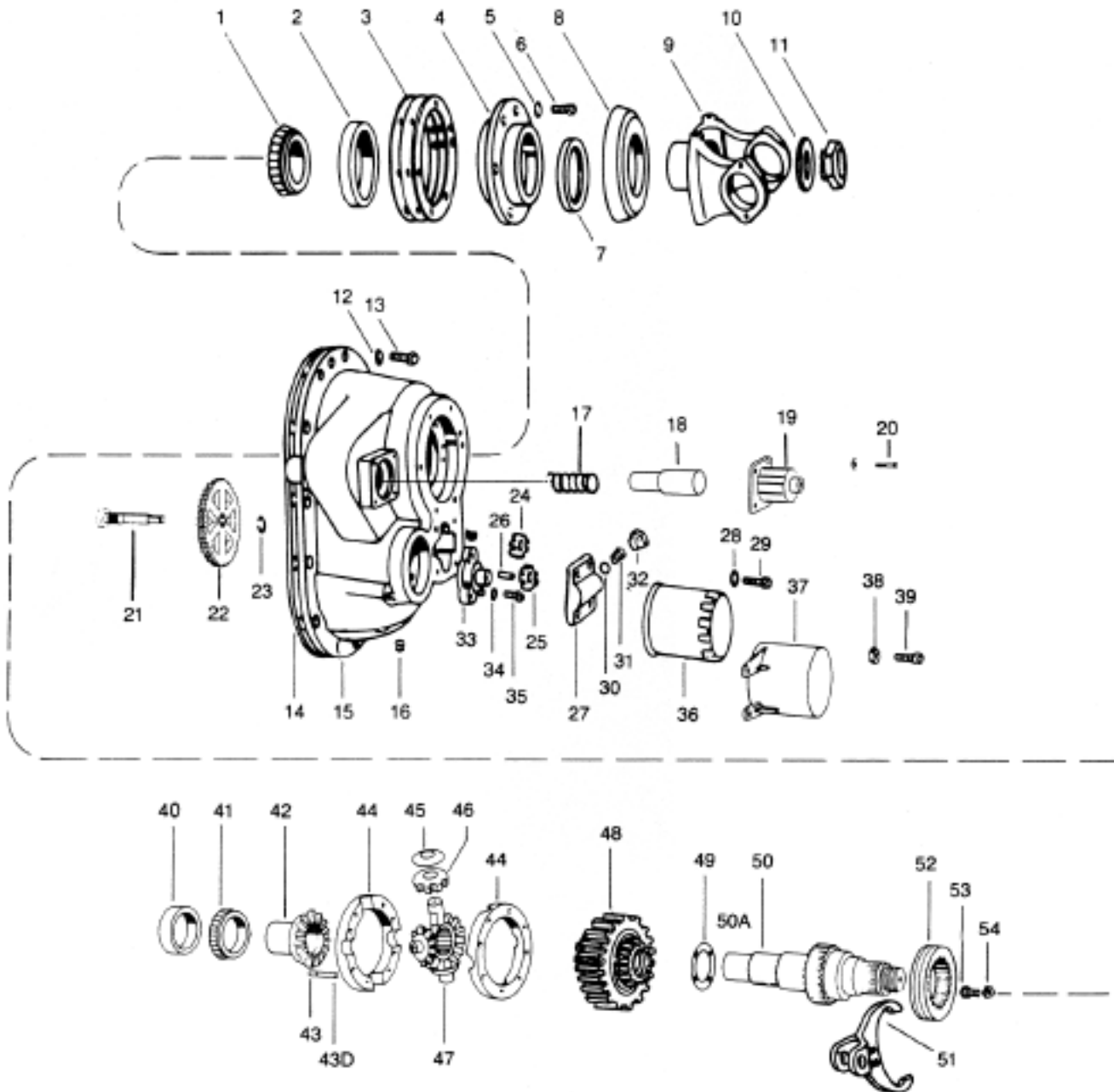


# ROCKWELL®

## INTER-AXLE DIFFERENTIAL ASSEMBLY - SL/SQ100 QHP, QD-100, QP-100, LD-100, LP-100, QRD-100, QRP-100



PARTS LISTED IN THIS CATALOG ARE NOT NECESSARILY MANUFACTURED BY THE ORIGINAL EQUIPMENT MANUFACTURER AND ANY REFERENCE TO THE TRADEMARKS OR PART NUMBERS OF OTHERS ARE FOR CROSS REFERENCE INFORMATIONAL PURPOSES ONLY. THE TRADEMARKS OF OTHERS REFERRED TO HEREIN ARE OWNED BY THEIR RESPECTIVE COMPANIES AND ARE NOT AFFILIATED IN ANY WAY WITH MIDWEST TRUCK & AUTO PARTS, INC.® MOTIVE GEAR® AND WORLD AMERICAN® ARE THE REGISTERED TRADEMARKS OF MIDWEST TRUCK & AUTO PARTS, INC.® USE OF THE ® IN CONNECTION WITH A MARK OF MIDWEST TRUCK & AUTO PARTS, INC.® INDICATES THAT THE MARK IS REGISTERED IN AT LEAST THE UNITED STATES. NO REPRESENTATION IS MADE WITH RESPECT TO THE SOURCE OF MANUFACTURE OF ANY PARTICULAR PART. © 2005, MIDWEST TRUCK & AUTO PARTS, INC.® ALL RIGHTS RESERVED.

# ROCKWELL®

## INTER-AXLE DIFFERENTIAL ASSEMBLY - SL/SQ100 QHP, QD-100, QP-100, LD-100, LP-100, QRD-100, QRP-100

ITEM	DESCRIPTION	QTY	PART NO.	REMARKS
1	Cone-input shaft bearing cage	1	JM-511946	
2	Cup-input shaft bearing cage	1	JM-511910	
3	Shim- .003 input shaft .005 bearing cage .010	1	2203-R-6518 2203-S-6519 2203-T-6520	Available in KIT 1500
4	Input shaft bearing cage assy	1	A-3226-M-585	
5	Washer - Input shaft bearing cage	6	1229-E-1513	
6	Capscrew - Input shaft bearing cage	6	S-2711-1	
7	Oil seal - Input shaft	1	A-1205-E-1227 - 476023N A-1205-F-2424 - 100495	Pre 8-83 Triple lip seal
8	Deflector-yoke	1	DEFR50-4	
9,8	Input shaft yoke assy	1		<b>CALL YOUR SALES REP</b>
10	Washer - Input shaft	1	1229-T-1736	
11	Nut - Input shaft	1	1227-R-902	
12	Washer - helical gear cover to carrier	12	1229-C-1511	
13	Capscrew helical gear cover to cover	12 2 10	S-2812-2 S-2812-2 15-X-1558	Aluminum carrier
14	Gasket - helical gear cover to carrier	1	1199-T-3842	(Silastic) <b>SEE KIT 533</b>
15	Cover - helical gear QHP, LP/QP-100	1	3280-U-8081 KIT-2268	After 8/83 Prior to 8/83
15A	Cover - helical gear LD-100, QD-100	1	3266-H-970 KIT 2269	After 8/83 Prior to 8/83
15B	Tube - helical gear cover	1	2297-V-2284	QHP, LP/QP-100 NOT SHOWN - OLD STYLE
15C	Plug - helical gear cover - Welch®	1	PW-214	NOT SHOWN - OLD STYLE
16	Plug - helical cover drain	1	P-26	
17	Spring - push rod	1	2258-U-411	
18	Push rod	1	2244-E-83 2297-X-2494	AFTER 8/83 OLD STYLE - Prior to 8/83
19, 20	Air shift chamber assy	1	A1-3261-V-308	Includes attaching hardware <b>(Item No. 20) SEE KIT 2266</b>
20	Capscrew - air shift chamber assy	4	10-X-1334	
21, 22	Shaft assy - pump drive	1	A1-2297-B-4240	<b>SEE KIT 1588</b>
23	Snap ring - pump shaft	1	1229-G-2763	
24	Gear - pump drive	1	3892-Z-4368	
25	Gear - pump driven	1	3892-Z-4369	
26	Shaft - pump idler	1	1199-R-3346	
27, 30, 31, 32	Relief valve pump cover assy	1	A-3266-P-510	
28	Washer - pump cover	4	1229-F-1669	
29	Capscrew - pump cover	2	S-256-1	
30	Ball - relief valve	1	1898-E-57	Used with QHP, LP/QP-100 only
31	Spring - relief valve	1	2258-A-521	
32	Plug - relief valve assy with ring	1	A-1199-V-3402	
33	Adapter - filter	1	2297-E-2293	
34	Washer - filter adapter	2	1229-E-1669	
35	Capscrew - filter adapter	2	S-2510-1	
36	Filter - oil	1	3280-V-5040	
37	Shield - oil filter	1	3280-V-6964	
37A	Washer	4	1229-E-1669	
38	Locknut - pump shield	2	NL-25-1	
39	Stud - pump shield & pump cover	2	4-X-1707	
40	Cup - input shaft rear bearing	1	JLM-710910	
41	Cone - input shaft rear bearing	1	JLM-710949C	2234-E-1019 & JLM-710949C
42	Differential side gear	1	2234-E-1019 MPS 3344 MPS 3345	avail. as A-2234-E-1019 assy LD/QD-100 - Prior to 12/85 QHP, LP/QP-100 - Prior to 12/85
43A	Capscrew - inter axle diff.	8	S-2524-1	
43B	Washer - inter axle diff.	16	1229-E-1669	Not shown - Available as KIT 1590
43C	Nut - inter axle diff.	8	NL-25-1	
43D	Thread locking liquid/diff. case	1	2297-C-7049	.34 oz. tube

PARTS LISTED IN THIS CATALOG ARE NOT NECESSARILY MANUFACTURED BY THE ORIGINAL EQUIPMENT MANUFACTURER AND ANY REFERENCE TO THE TRADEMARKS OR PART NUMBERS OF OTHERS ARE FOR CROSS REFERENCE INFORMATIONAL PURPOSES ONLY. THE TRADEMARKS OF OTHERS REFERRED TO HEREIN ARE OWNED BY THEIR RESPECTIVE COMPANIES AND ARE NOT AFFILIATED IN ANY WAY WITH MIDWEST TRUCK & AUTO PARTS, INC.® MOTIVE GEAR® AND WORLD AMERICAN® ARE THE REGISTERED TRADEMARKS OF MIDWEST TRUCK & AUTO PARTS, INC.® USE OF THE ® IN CONNECTION WITH A MARK OF MIDWEST TRUCK & AUTO PARTS, INC.® INDICATES THAT THE MARK IS REGISTERED IN AT LEAST THE UNITED STATES. NO REPRESENTATION IS MADE WITH RESPECT TO THE SOURCE OF MANUFACTURE OF ANY PARTICULAR PART. © 2005, MIDWEST TRUCK & AUTO PARTS, INC.® ALL RIGHTS RESERVED.

# ROCKWELL®

## INTER-AXLE DIFFERENTIAL ASSEMBLY - SL/SQ100 QHP, QD-100, QP-100, LD-100, LP-100, QRD-100, QRP-100

ITEM	DESCRIPTION		QTY	PART NO.	REMARKS
43A, 43B, 43C, 44, 45, 46, 47	Inter-axle diff. & nest assy	2.00" - 39 spline	1	A-3235-F-1800	
43A, 43B, 43C, 44, 45, 46, 47	Inter-axle diff. & nest assy	.2.10" - 41 spline	1	A3-3235-F-1800 MPS 3344 MPS 3345	LD/QD-100 - Prior to 12/85 QHP, LP/QP-100 - Prior to 12/85
47	Spider - inter-axle diff.	2.00" - 39 spline 2.10" - 41 spline	1	3278-H-372 3278-A-1093	
48	Gear - helical drive		1	3892-M-4927 3892-F-4738 MPS 3344 MPS 3345	Use with 1014 - 1015 shaft Use with 110 shaft LD/QD-100 - Prior to 12/85 QHP, LP/QP-100 - Prior to 12/85
49	Thrust washer		1	1229-H-2764 1229-M-4069	2.25" I.D. 2.39" I.D.
50, 50A 10, 11	Input shaft with pump	2.10" - 41 spline	1	A1-3297-A-1015 MPS 3345 Effective 12/85	QHP, LP/QP-100 only.
50, 10, 11	Input shaft	2.00" - 39 spline 2.10" - 41 spline less pump	1	A-3297-F-110 A-3297-Z-1014 MPS 3344 Effective 12/85	LD/QD-100 only. LD-QD-100 only.
50A	Ball - input shaft		1	1228-K-37	QHP, LP/QP-100 only - Not shown. Repl. 1898-B-70
51	Shift fork		1	A-3296-T-150 3296-E-57 KIT 2268 KIT 2269	After 8/83 Old style - Prior to 8/83 QHP, LP/QP-100 - Prior to 8/83 LD/QD-100 - Prior to 8/83
52	Clutch - collar-input shaft		1	3280-G-5519	
53	Stop screw - push rod		1	S-1812-2	
54	Locknut - stop screw		1	NUJA8-20-6	



PARTS LISTED IN THIS CATALOG ARE NOT NECESSARILY MANUFACTURED BY THE ORIGINAL EQUIPMENT MANUFACTURER AND ANY REFERENCE TO THE TRADEMARKS OR PART NUMBERS OF OTHERS ARE FOR CROSS REFERENCE INFORMATIONAL PURPOSES ONLY. THE TRADEMARKS OF OTHERS REFERRED TO HEREIN ARE OWNED BY THEIR RESPECTIVE COMPANIES AND ARE NOT AFFILIATED IN ANY WAY WITH MIDWEST TRUCK & AUTO PARTS, INC.® MOTIVE GEAR® AND WORLD AMERICAN® ARE THE REGISTERED TRADEMARKS OF MIDWEST TRUCK & AUTO PARTS, INC.® USE OF THE ® IN CONNECTION WITH A MARK OF MIDWEST TRUCK & AUTO PARTS, INC.® INDICATES THAT THE MARK IS REGISTERED IN AT LEAST THE UNITED STATES. NO REPRESENTATION IS MADE WITH RESPECT TO THE SOURCE OF MANUFACTURE OF ANY PARTICULAR PART. © 2005, MIDWEST TRUCK & AUTO PARTS, INC.® ALL RIGHTS RESERVED.