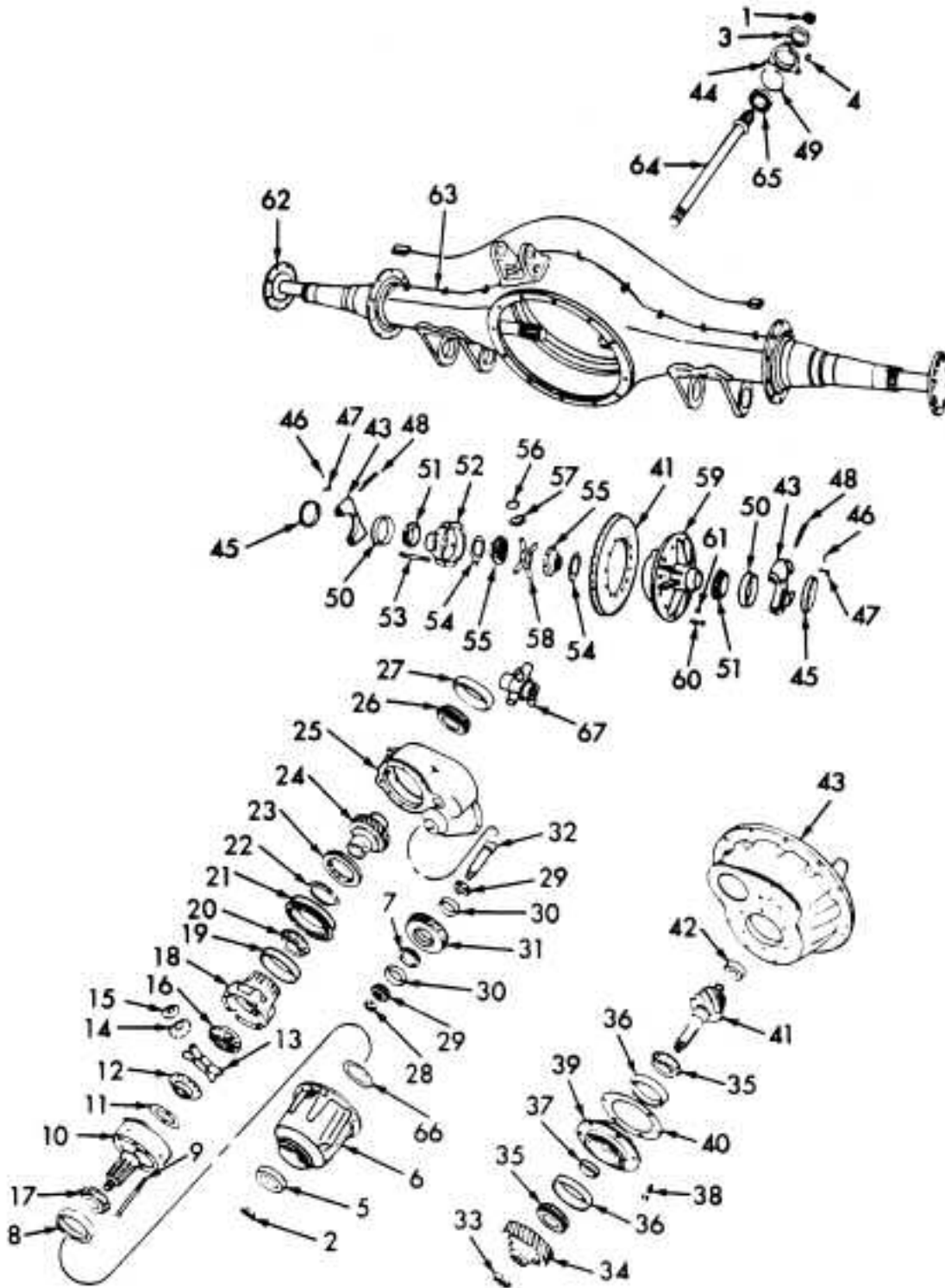


# INTERNATIONAL<sup>®</sup>

## RA472 FRONT - REAR AXLE



PARTS LISTED IN THIS CATALOG ARE NOT NECESSARILY MANUFACTURED BY THE ORIGINAL EQUIPMENT MANUFACTURER AND ANY REFERENCE TO THE TRADEMARKS OR PART NUMBERS OF OTHERS ARE FOR CROSS REFERENCE INFORMATIONAL PURPOSES ONLY. THE TRADEMARKS OF OTHERS REFERRED TO HEREIN ARE OWNED BY THEIR RESPECTIVE COMPANIES AND ARE NOT AFFILIATED IN ANY WAY WITH MIDWEST TRUCK & AUTO PARTS, INC.<sup>®</sup> MOTIVE GEAR<sup>®</sup> AND WORLD AMERICAN<sup>®</sup> ARE THE REGISTERED TRADEMARKS OF MIDWEST TRUCK & AUTO PARTS, INC.<sup>®</sup> USE OF THE <sup>®</sup> IN CONNECTION WITH A MARK OF MIDWEST TRUCK & AUTO PARTS, INC.<sup>®</sup> INDICATES THAT THE MARK IS REGISTERED IN AT LEAST THE UNITED STATES. NO REPRESENTATION IS MADE WITH RESPECT TO THE SOURCE OF MANUFACTURE OF ANY PARTICULAR PART. © 2005, MIDWEST TRUCK & AUTO PARTS, INC.<sup>®</sup> ALL RIGHTS RESERVED.

# INTERNATIONAL<sup>®</sup>

## RA472 FRONT - REAR AXLE

ITEM NO.	PART NO.	DESCRIPTION	QTY
		AXLE, FWD REAR INTL/DANA <sup>®</sup> J340S, J380S, J440S 34/38/40000 LB. SGL-RED	
1	1696473C1	NUT, COMPANION FLG OUTPUT	1
2		NUT, COMPANION FLG INPUT	
	440302C1	PRIOR TO 7/1/93	1
	1696474C1	/ 7/1/93 AND LATER	1
3		SEAL, OUTPUT SHAFT OIL	
	415013N	PRIOR TO 7/15/91	1
	1691147C2	7/15/91 AND LATER	1
4	26310R1	BOLT, RET TO HSG	4
	25709R1	WASHER, FL 3/8 IN.	4
5	415281N	@ SEAL, INTERAXLE DIFF. HSG OIL	1
6		HOUSING, INTERAXLE DIFF.	
	481119C2	PRIOR TO 7/1/93	1
		ORDER 1695386C1 HSG AND 1695385C91 BRG	
	1695386C1	▶ 7/1/93 AND LATER	1
		SCREW, 12 PT-HD	
		1/2-13UNC X	
	583164C1	1-1/4 IN.	6
	583165C1	2 IN.	1
	554204C1	SEALANT, SILICONE, 3 OZ. TUBE	1
		PLUG, INTERAXLE DIFF. HSG DRAIN	
		7/1/93 AND LATER	
	586045C1	W/O CODE 14WLD	1
	2035620C1	W/CODE 14WLD	1
7		SPACER, IDLER GEAR BRG	
		OLD DESIGN	
	463423C2	1.277 IN. THK	AR
	463424C2	1.282 IN. THK	AR
	463425C2	1.287 IN. THK	AR
	463426C2	1.292 IN. THK	AR
	463427C2	1.297 IN. THK	AR
	463428C2	1.302 IN. THK	AR
	463429C2	1.307 IN. THK	AR
	497865C1	1.312 IN. THK	AR
	497866C1	1.312 IN. THK	AR
		NEW DESIGN	
	1654953C1	1.632 IN. THK	AR
	1654954C1	1.637 IN. THK	AR
	1654955C1	1.642 IN. THK	AR
	1654956C1	1.647 IN. THK	AR
	1654957C1	1.652 IN. THK	AR
	1654958C1	1.657 IN. THK	AR
	1654959C1	1.662 IN. THK	AR
	1654960C1	1.665 IN. THK	AR
8	JLM710910	@ CUP, INTERAXLE DIFF. FRT BRG FOR SERVICE, ORDER JLM710910	1
9	27857R1	SCREW, 12 PT HD 1/2NC X 2-3/4 IN.	8
		PRIOR TO 7/1/93	
		▶ / RIVET, INTERAXLE DIFF. CASE	8
		7/1/93 AND LATER	

ITEM NO.	PART NO.	DESCRIPTION	QTY
10	463415C91	▶ / CASE, INTERAXLE DIFF. FRT	1
11	W4860	▶ /@& BEARING, FRT SIDE GEAR THRUST	1
12	463414C1	▶ /& GEAR, INTERAXLE DIFF FRT SIDE	1
13	463412C1	▶ /& SPIDER, INTERAXLE DIFF.	1
14	463419C1	▶ /& GEAR, INTERAXLE DIFF. PINION	4
15	463413C1	▶ /& WASHER, TRANSAXLE DIFF. PINION GEAR THRUST	4
16	463402C1	▶ /& GEAR, INTERAXLE DIFF. REAR SIDE	1
17	JLM710949	@ CONE, INTERAXLE DIFF. FRT BRG FOR SERVICE, ORDER JLM710949	1
18	463404C91	▶ / CASE, INTERAXLE DIFF. REAR	1
19	28921	@ CUP, INTERAXLE DIFF. REAR CASE BRG	1
20	28985	@ CONE, INTERAXLE DIFF. REAR CASE BRG	1
21	XLS5-1/8A	@ BEARING, INTERAXLE DIFF. REAR BALL	1
22	495024C1	RING, INTERAXLE DIFF. REAR BRG RET	1
23	463430C2	COLLAR, SHIFT CLUTCH	1
24	481108C1	GEAR, DIFF. INPUT	1
25	592535C1	CASE, INTERAXLE DIFF. SCREW, 12 PT-HD 1/2-13UNC X	1
		1-1/4 IN.	5
	583164C1	1-1/4 IN.	5
	583166C1	2-1/4 IN.	6
		PLUG, DRAIN	
	586045C1	W/O CODE 14WLD	1
	2035620C1	W/CODE 14WLD	1
	554204C1	SEALANT, SILICONE 3 OZ. TUBE	1
	592534C92	CYLINDER, DIFF. SHIFT LK	1
	378066R1	RING, SNAP	1
	584278C1	SPRING, COMPRESSION	1
26	JLM710949	@ CONE, INPUT GEAR BRG FOR SERVICE, ORDER JLM710949	1
27	JLM710910	@ CUP, INPUT GEAR BRG FOR SERVICE, ORDER JLM710910	1
28	1696472C1	NUT, IDLER GEAR SHAFT STOP	1
29		CONE, IDLER GEAR BRG	
	3877	@ OLD DESIGN	2
	M802048	@ NEW DESIGN	2
30		CUP, IDLER GEAR BRG	
	3820	@ OLD DESIGN	2
	M802011	@ NEW DESIGN	2
31		GEAR IDLER	1
	481107C91	LARGE BEARING (3.75")	
	1654949C91	SMALL BEARING (3.25")	
32	463420C2	SHAFT, IDLER GEAR	1
33	83799	NUT, PINION SHAFT CASTELLATED	1
	19415R1	PIN, SLT	1
34	483442C1	GEAR, PINION SHAFT DRIVEN	1
35	72225C	CONE, PINION BRG	2

PARTS LISTED IN THIS CATALOG ARE NOT NECESSARILY MANUFACTURED BY THE ORIGINAL EQUIPMENT MANUFACTURER AND ANY REFERENCE TO THE TRADEMARKS OR PART NUMBERS OF OTHERS ARE FOR CROSS REFERENCE INFORMATIONAL PURPOSES ONLY. THE TRADEMARKS OF OTHERS REFERRED TO HEREIN ARE OWNED BY THEIR RESPECTIVE COMPANIES AND ARE NOT AFFILIATED IN ANY WAY WITH MIDWEST TRUCK & AUTO PARTS, INC.<sup>®</sup> MOTIVE GEAR<sup>®</sup> AND WORLD AMERICAN<sup>®</sup> ARE THE REGISTERED TRADEMARKS OF MIDWEST TRUCK & AUTO PARTS, INC.<sup>®</sup> USE OF THE "®" IN CONNECTION WITH A MARK OF MIDWEST TRUCK & AUTO PARTS, INC.<sup>®</sup> INDICATES THAT THE MARK IS REGISTERED IN AT LEAST THE UNITED STATES. NO REPRESENTATION IS MADE WITH RESPECT TO THE SOURCE OF MANUFACTURE OF ANY PARTICULAR PART. © 2005, MIDWEST TRUCK & AUTO PARTS, INC.<sup>®</sup> ALL RIGHTS RESERVED.

# INTERNATIONAL<sup>®</sup>

## RA472 FRONT - REAR AXLE

ITEM NO.	PART NO.	DESCRIPTION	QTY
36	72487	CUP, PINION BRG	2
37		SPACER, PINION BRG	
	360453C1	.718 IN. THK	AR
	360457C1	.722 IN. THK	AR
	360461C1	.726 IN. THK	AR
	360465C1	.730 IN. THK	AR
	360469C1	.734 IN. THK	AR
	393975C1	.738 IN. THK	AR
	393979C1	.742 IN. THK	AR
38	1691152C1	BOLT, PINION BRG CAGE	8
39	482787C91	CAGE, PINION BRG, W/CUPS	1
40		SHIM, PINION BRG CAGE	
	463435C2	.003 IN. THK	AR
	463436C2	.005 IN. THK	AR
41	//	GEAR SET, RING AND PINION INCLUDES ETN0083799 CASTELLATED NUT AND 19415R1 SLT PIN	
	597236C91	3.54-1 RATIO	1
	597237C91	3.73-1 RATIO	1
	597238C91	3.91-1 RATIO	1
	597239C91	4.10-1 RATIO	1
	597240C91	4.44-1 RATIO	1
	597241C91	4.78-1 RATIO	1
	1694169C91	5.11-1 RATIO	1
	597242C91	5.37-1 RATIO	1
	597243C91	6.14-1 RATIO	1
	597244C91	6.57-1 RATIO	1
	597245C91	7.17-1 RATIO	1
	597246C91	8.17-1 RATIO	1
		BOLT, RING GEAR TO DIFF. CASE	AR
42	MU1307TM	@ BEARING, PINION PILOT	1
43	464253C92	CARRIER, DIFF. W/CAPS	1
	1691150C1	BOLT, CARR TO HSG	12
	5/8 R	WASHER, LK 5/8 IN.	12
		GASKET, ELIMINATOR	
	1693855C1	6 ML	1
	1693856C1	50 ML1	
44	481811C1	CAGE, OUTPUT SHAFT BRG	1
45	69208R1	ADJUSTER, DIFF.	2
46	3/16 X 1 P	PIN, COTTER 3/16 X 1 IN.	2
47	157491R2	LOCK, DIFF. BRG ADJ	2
48	24895R1	BOLT, DIFF. BRG CAP	4
	25712R1	WASHER, DIFF. BRG CAP BOLT	4
49	660433R1	RING, OUTPUT SHAFT BRG	1
		SNAP	
50	47820	@ CUP, DIFF. BRG	2
51	47890	@ CONE, DIFF. BRG	2
52	864358R2	# CASE, DIFF. PL HALF	1
53		# BOLT, DIFF. CASE	
	1691257C1	3.54-1 RATIO	8
	1691256C1	3.73 THRU 4.44-1 RATIO	8
	1691255C1	4.78 THRU 8.17-1 RATIO	8
54	157494R1	▲ WASHER, DIFF. SIDE GEAR THRUST	2
55		▲ GEAR, DIFF. SIDE	2
	157563R2	20 SPLINE	
	571354C1	41 SPLINE	
	571357C1	39 SPLINE	

ITEM NO.	PART NO.	DESCRIPTION	QTY
56	864360R1	▲ WASHER, DIFF. PINION GEAR THRUST	4
57	864357R2	▲ GEAR, DIFF. PINION	4
58	864356R2	▲ SPIDER, DIFF.	1
59		# CASE, DIFF. FLG HALF	
	584281C1	3.54-1 RATIO	1
	505756C1	3.73 THRU 4.44-1 RATIO	1
	505757C1	4.78 THRU 8.17-1 RATIO	1
60	157490R1	&& RIVET, RING GEAR TO DIFF. CASE	12
61	27293R1	# NUT, DIFF. CASE BOLT	8
62		SHAFT, AXLE	
	157518R2	PRE-COMMON WHEEL END 2-1/8 IN. X 20 SPLINE COMMON WHEEL END CODE 14472	2
		2-1/8 IN. X 41 SPLINE W/O CODE 844004	2
	571350C2	W/O CODE 844004	2
	1615350C1	W/CODE 844004	2
	2502179C1	CODE 14475	2
		2 IN. X 39 SPLINE	
	1649262C1	CODE 14476	2
		2 IN. X 39 SPLINE	
		STUD, WHEEL FLG	16
		NUT, HEX NY-LOCK <sup>®</sup>	
	9412368	EXC CODE 844004	16
		3/4-16UNF	
	144423H	FOR CODE 844004	16
		5/8-18UNF	
		GASKET, AXLE SHAFT FLG	
	895493R2	EXC CODE 844004	2
	56152R2	FOR CODE 844004	2
63		HOUSING, AXLE CODE 14472	
		HEND <sup>®</sup> SUSP EXC AIR SUSP W/O 2-BOLT TTR-BRKT	
	595593C1	W/O 12.8, 15.5 HI TTR-BRKT	1
	595599C1	W/12.8 HI TTR-BRKT	1
	595598C2	W/15.5 HI TTR-BRKT	1
		RE-ORDER 595593C1 HSG AND 591407C4 TTR-BRKT	
		W/2-BOLT TTR-BRKT W/O 2-BOLT BEAM HANGER BRKT	
	1663955C1	W/O 12.8 HI TTR-BRKT	1
	1668714C1	W/12.8 HI TTR-BRKT	1
		W/2-BOLT BEAM HANGER BRKT	
	1683723C1	W/O 12.8 HI TTR-BRKT	1
	1683725C1	W/12.8 HI TTR-BRKT	1
	1697105C1	FOR AIR SUSP	1
		INTL <sup>®</sup> SUSP 4-SPG EXC LOW PROFILE SUSP	

PARTS LISTED IN THIS CATALOG ARE NOT NECESSARILY MANUFACTURED BY THE ORIGINAL EQUIPMENT MANUFACTURER AND ANY REFERENCE TO THE TRADEMARKS OR PART NUMBERS OF OTHERS ARE FOR CROSS REFERENCE INFORMATIONAL PURPOSES ONLY. THE TRADEMARKS OF OTHERS REFERRED TO HEREIN ARE OWNED BY THEIR RESPECTIVE COMPANIES AND ARE NOT AFFILIATED IN ANY WAY WITH MIDWEST TRUCK & AUTO PARTS, INC.<sup>®</sup> MOTIVE GEAR<sup>®</sup> AND WORLD AMERICAN<sup>®</sup> ARE THE REGISTERED TRADEMARKS OF MIDWEST TRUCK & AUTO PARTS, INC.<sup>®</sup> USE OF THE <sup>®</sup> IN CONNECTION WITH A MARK OF MIDWEST TRUCK & AUTO PARTS, INC.<sup>®</sup> INDICATES THAT THE MARK IS REGISTERED IN AT LEAST THE UNITED STATES. NO REPRESENTATION IS MADE WITH RESPECT TO THE SOURCE OF MANUFACTURE OF ANY PARTICULAR PART. © 2005, MIDWEST TRUCK & AUTO PARTS, INC.<sup>®</sup> ALL RIGHTS RESERVED.

# INTERNATIONAL<sup>®</sup>

## RA472 FRONT - REAR AXLE

ITEM NO.	PART NO.	DESCRIPTION	QTY
63	1686122C1	W/O ABS/ATC	1
	1686122C1	W/ABS/ATC	1
	1652755C1	FOR LOW PROFILE SUSP AIR	1
	1697105C1	EXC LOW PROFILE SUSP	1
	2021632C1	FOR LOW PROFILE SUSP ORDER 595594C1 HSG AND 1672183C1 BRKT NEWAY <sup>®</sup> AIR SUSP EXC LOW PROFILE SUSP	1
	596819C91	12.8 HI TTR-BRKT	1
	595595C1	13.3 HI TTR-BRKT	1
	1668754C2	FOR LOW PROFILE SUSP ORDER 1682913C1 HSG AND 595622C2 BRKT REYCO <sup>®</sup> 101, 101A, 102, 102W SUSP	1
	1686122C1	W/O ABS/ATC	1
	1686122C1	W/ABS/ATC	1
	1668714C1	RIDEWELL <sup>®</sup> SUSP W/O 2-BOLT BEAM HANGER BRKT	1
	1683725C1	W/2-BOLT BEAM HANGER BRKT	1
	2038767C1	CHALMERS <sup>®</sup> SUSP CODE 14475	1
	595573C1	HEND <sup>®</sup> SUSP INTL SUSP	1
	595574C1	4-SPG	1
	595575C1	AIR	1
	1654197C1	NEWAY <sup>®</sup> AIR SUSP ORDER 1654202C1 HSG AND 595622C2 BRKT	1
	595574C1	REYCO <sup>®</sup> SUSP CODE 14476 HEND <sup>®</sup> SUSP	1
	595593C1	W/O 12.8, 15.5 HI TTR-BRKT	1
	595599C1	W/12.8 HI TTR-BRKT	1
	595598C2	W/15.5 HI TTR-BRKT RE-ORDER 595593C1 HSG AND 591407C4 TTR-BRKT	1
	1686122C1	INTL SUSP 4-SPG	1
	1697105C1	AIR	1
	59595C1	NEWAY <sup>®</sup> AIR SUSP	1
	1686122C1	REYCO <sup>®</sup> SUSP BRACKET, TRANSVERSE TORQUE ROD	1
	595622C2	12.8 IN.	1
	591407C4	15.5 IN.	1
	91916R91	BREATHER, AXLE HSG PLUG, FILLER	1
	586045C1	W/O CODE 14WLD	1
	2035620C1	W/CODE 14WLD	1
	586049C1	PLUG, MAGNETIC PIPE DRAIN	1
	586048C1	PLUG, TEMP SENDER HOLE	1

ITEM NO.	PART NO.	DESCRIPTION	QTY
64	464238C2	SHAFT, OUTPUT	1
65	210	@ BEARING, OUTPUT SHAFT	1
66		SHIM, INTERAXLE DIFF. BRG	
	496276C1	.026 IN. THK	AR
	496277C1	.033 IN. THK	AR
	482040C1	.040 IN. THK	AR
	482041C1	.047 IN. THK	AR
	482042C1	.054 IN. THK	AR
	482043C1	.061 IN. THK	AR
	482044C1	.068 IN. THK	AR
	482045C1	.075 IN. THK	AR
67		DIFFERENTIAL, NO-SPIN <sup>™</sup>	1
		<b>NOTE:</b> ITEM 67 REPLACES ITEMS 54 THRU 58 WHEN NO-SPIN <sup>™</sup> DIFF. IS USED.	
		DIFFERENTIAL, STD CODE 14472	
		PRE-COMMON WHEEL END	
		2-1/8 IN. X 20 SPLINE	
	991202C91	3.73-1 RATIO	
	991203C91	3.91-1 RATIO	
	991204C91	4.10-1 RATIO	
	991205C91	4.44-1 RATIO	
	991206C91	4.78-1 RATIO	
	991207C91	5.38-1 RATIO	
	991208C91	6.14-1 RATIO	
	991209C91	6.57-1 RATIO	
	991210C91	7.17-1 RATIO	
	991211C91	8.17-1 RATIO	
		COMMON WHEEL END	
		2-1/8 IN. X 41 SPLINE	
	1695364C91	3.54-1 RATIO	
	1695365C91	3.73-1 RATIO	
	1695366C91	3.91-1 RATIO	
	1695367C91	4.10-1 RATIO	
	1695368C91	4.44-1 RATIO	
	1695369C91	4.78-1 RATIO	
	1698171C91	5.11-1 RATIO	
	1695370C91	5.38-1 RATIO	
	1695371C91	6.14-1 RATIO	
	1695372C91	6.57-1 RATIO	
	1695373C91	7.17-1 RATIO	
	1695373C91	8.17-1 RATIO	
		CODES 14475, 14476	
		2 IN. X 39 SPLINE	
	1651282C91	3.54-1 RATIO	
	1651283C91	3.73-1 RATIO	
	1651284C91	3.91-1 RATIO	
	1651285C91	4.10-1 RATIO	
	1651286C91	4.44-1 RATIO	
	1651287C91	4.78-1 RATIO	
	1651288C91	5.38-1 RATIO	
	1651289C91	6.14-1 RATIO	
	1651290C91	6.57-1 RATIO	
	1651291C91	7.17-1 RATIO	
		FOR NO-SPIN <sup>™</sup> APPLICATIONS, ORDER STD DIFF. AND ITEM 67	

PARTS LISTED IN THIS CATALOG ARE NOT NECESSARILY MANUFACTURED BY THE ORIGINAL EQUIPMENT MANUFACTURER AND ANY REFERENCE TO THE TRADEMARKS OR PART NUMBERS OF OTHERS ARE FOR CROSS REFERENCE INFORMATIONAL PURPOSES ONLY. THE TRADEMARKS OF OTHERS REFERRED TO HEREIN ARE OWNED BY THEIR RESPECTIVE COMPANIES AND ARE NOT AFFILIATED IN ANY WAY WITH MIDWEST TRUCK & AUTO PARTS, INC.<sup>®</sup> MOTIVE GEAR<sup>®</sup> AND WORLD AMERICAN<sup>®</sup> ARE THE REGISTERED TRADEMARKS OF MIDWEST TRUCK & AUTO PARTS, INC.<sup>®</sup> USE OF THE <sup>®</sup> IN CONNECTION WITH A MARK OF MIDWEST TRUCK & AUTO PARTS, INC.<sup>®</sup> INDICATES THAT THE MARK IS REGISTERED IN AT LEAST THE UNITED STATES. NO REPRESENTATION IS MADE WITH RESPECT TO THE SOURCE OF MANUFACTURE OF ANY PARTICULAR PART. © 2005, MIDWEST TRUCK & AUTO PARTS, INC.<sup>®</sup> ALL RIGHTS RESERVED.

# INTERNATIONAL<sup>®</sup>

## RA472 FRONT - REAR AXLE

ITEM NO.	PART NO.	DESCRIPTION	QTY
		// SEE DIFF. CASE LISTING WHEN CHANGING RATIOS	
	#	CASE, W/BOLTS AND NUTS	
586702C91		3.54-1 RATIO	
493204C91	#	3.73 THRU 4.44-1 RATIO	
493205C91	#	4.78 THRU 8.17-1 RATIO	
493197C91	▲	GEAR SET, MAIN DIFF. SIDE AND PINION 2-1/8 IN. X 20 SPLINE PRE-COMMON WHEEL END	
565706C91	▲	2-1/8 IN. X 41 SPLINE COMMON WHEEL END CODES	
585705C91	▲	2 IN. X 39 SPLINE	
493200C91	&	GEAR SET, INTERAXLE DIFF. SIDE AND PINION	
578500C91	▶	KIT, INTERAXLE DIFF. W/HSG PRIOR TO 7/1/93	
1695389C91	/	KIT, INTERAXLE DIFF. 7/1/93 AND LATER	
RA200FR	@	BRG AND SEAL KIT	
1696994C91	&&	KIT, RING GEAR BOLT AND NUT	



PARTS LISTED IN THIS CATALOG ARE NOT NECESSARILY MANUFACTURED BY THE ORIGINAL EQUIPMENT MANUFACTURER AND ANY REFERENCE TO THE TRADEMARKS OR PART NUMBERS OF OTHERS ARE FOR CROSS REFERENCE INFORMATIONAL PURPOSES ONLY. THE TRADEMARKS OF OTHERS REFERRED TO HEREIN ARE OWNED BY THEIR RESPECTIVE COMPANIES AND ARE NOT AFFILIATED IN ANY WAY WITH MIDWEST TRUCK & AUTO PARTS, INC.<sup>®</sup> MOTIVE GEAR<sup>®</sup> AND WORLD AMERICAN<sup>®</sup> ARE THE REGISTERED TRADEMARKS OF MIDWEST TRUCK & AUTO PARTS, INC.<sup>®</sup> USE OF THE <sup>®</sup> IN CONNECTION WITH A MARK OF MIDWEST TRUCK & AUTO PARTS, INC.<sup>®</sup> INDICATES THAT THE MARK IS REGISTERED IN AT LEAST THE UNITED STATES. NO REPRESENTATION IS MADE WITH RESPECT TO THE SOURCE OF MANUFACTURE OF ANY PARTICULAR PART. © 2005, MIDWEST TRUCK & AUTO PARTS, INC.<sup>®</sup> ALL RIGHTS RESERVED.