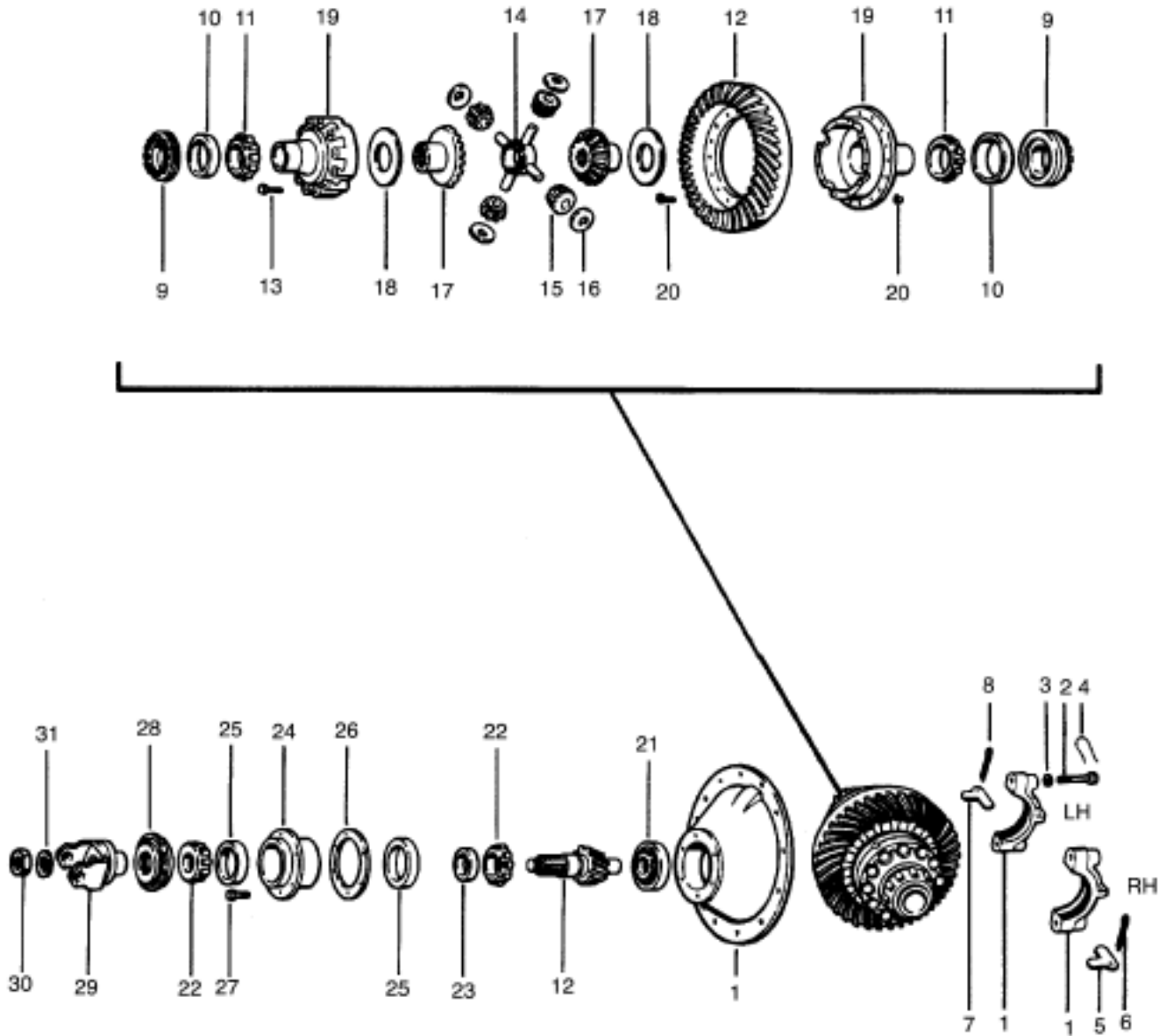


# EATON®

MODELS: RS341, 402(P), 451-P, 381(P), 401-P, 340, 380(P),  
400-P, 34PS, 38PS



PARTS LISTED IN THIS CATALOG ARE NOT NECESSARILY MANUFACTURED BY THE ORIGINAL EQUIPMENT MANUFACTURER AND ANY REFERENCE TO THE TRADEMARKS OR PART NUMBERS OF OTHERS ARE FOR CROSS REFERENCE INFORMATIONAL PURPOSES ONLY. THE TRADEMARKS OF OTHERS REFERRED TO HEREIN ARE OWNED BY THEIR RESPECTIVE COMPANIES AND ARE NOT AFFILIATED IN ANY WAY WITH MIDWEST TRUCK & AUTO PARTS, INC.® MOTIVE GEAR® AND WORLD AMERICAN® ARE THE REGISTERED TRADEMARKS OF MIDWEST TRUCK & AUTO PARTS, INC.® USE OF THE ® IN CONNECTION WITH A MARK OF MIDWEST TRUCK & AUTO PARTS, INC.® INDICATES THAT THE MARK IS REGISTERED IN AT LEAST THE UNITED STATES. NO REPRESENTATION IS MADE WITH RESPECT TO THE SOURCE OF MANUFACTURE OF ANY PARTICULAR PART. © 2005, MIDWEST TRUCK & AUTO PARTS, INC.® ALL RIGHTS RESERVED.



**MODELS: RS341, RS402, RS451, RS381, RS401, RS340, RS380, RS400, 34RS, 38RS**

ITEM NO.	PART NAME	QTY PER AXLE	RS341, RS401, RS402, RS451 BUILT AFTER 4/6/89	RS341, RS381, RS401, RS402, RS451 BUILT BEFORE 4/6/89	RS340, RS380, RS400	34RS 38RS
	<b>Bearing, Seal &amp; Gasket Kit</b>	1	RA222RR	RA1AR	RA1R	RA1AR
1	Diff. Carrier & Bearing Caps Carrier Casting No. (NSS) Includes Items 1-4	1	211219 128109	67804 106402	67804 106402	67804 106402
2	Bearing Capscrew	4	127179	127179	127179	127179
3	Flat Washer	4	26772	26772	26772	26772
4	Lockwire	4	-----	-----	90538	90538
5	Bearing Cap Adjuster Lock (RH)	1	13377	13377	13377	13377
6	Cotter Pin (RH)	1	90873	90873	90873	90873
7	Bearing Cap Adjuster Lock (LH)	1	14275	14275	14275	14275
8	Cotter Pin (LH)	1	90876	90876	90876	90876
9	Diff. Bearing Adjuster (RH)	1	110243	110243	27842	27842
	Diff. Bearing Adjuster (LH)	1	31562	31562	31562	31562
10	Diff. Bearing Cup (RH)	1	493	493	493	493
	Diff. Bearing Cup (LH)	1	563	563	56650	563
11	Diff. Bearing Cone (RH)	1	497	497	497	497
	Diff. Bearing Cone (LH)	1	567	567	56425	567
12	RING GEAR & DRIVE PINION SET Includes Item 20	1	<b>MATCHED PARTS: (SEE SEPARATE LISTING ON PAGE 22)</b>			
13	Diff. Case Capscrew	12	96271	96271	96271	96271
	WHEEL DIFF. SIDE GEAR & PINION KIT Includes Items 14-18 Models: 34, 340, 341	1	114469	114469	98850	98850
	38, 380, 381, 402	1	114470	114470	85358	85358
	400, 401, 451	1	98853	98853	98853	-----
	WHEEL DIFF. KIT LESS SIDE GEARS Includes Items 14-16, 18	1	118748	118748	118748	118748
14	Spider	1	38289	38289	38289	38289
	WHEEL DIFF. CASE KIT Ratios 3.08 & 3.25	1	212202	-----	-----	-----
	Ratios 3.36-5.29	1	106397	106397	106397	-----
	Ratios 5.57-7.17	1	124374	124374	124374	-----
	Includes Items 12-13 & 110243 Adjuster 12" O.D. - 1/2" Bolt Flanged Half 91114	1	-----	-----	-----	96794
	11-1/2" O.D. - 1/2" Bolt Flanged Half 91116	1	-----	-----	-----	96795
	5/8" Bolt Flanged Half 88677	1	-----	-----	-----	124374
15	Side Pinion 104139 replaces 37071	4	104139	104139	104139	104139
16	Side Pinion Thrust Washer	4	27810	27810	27810	27810
17	Side Gear Models: 34, 340, 341	2	110525	110525	37072	37072
	38, 380, 381, 402		110527	110527	37069	37069
	400, 401, 451		85486	85486	85486	-----
18	Side Gear Thrust Washer (RH)	2	27827	27827	27827	27827
19	Diff. Case (Plain Half) (NSS)	1	210017	210017	210017	210017
	Diff. Case (Flanged Half) (NSS)	1	-----	-----	-----	-----
	Ratios 3.08 & 3.25		127823	-----	-----	-----
	Ratios 3.36-5.29		103865	103865	103865	-----
	Ratios 5.57-7.17		88677	88677	88677	-----
20	RING GEAR NUT & BOLT KIT (5/8")	1	70745	70745	70745	70745
	Bolt	16	67586	67586	67586	67586
	Nut	16	60600	60600	60600	60600

**NSS = Not Sold Separately**

PARTS LISTED IN THIS CATALOG ARE NOT NECESSARILY MANUFACTURED BY THE ORIGINAL EQUIPMENT MANUFACTURER AND ANY REFERENCE TO THE TRADEMARKS OR PART NUMBERS OF OTHERS ARE FOR CROSS REFERENCE INFORMATIONAL PURPOSES ONLY. THE TRADEMARKS OF OTHERS REFERRED TO HEREIN ARE OWNED BY THEIR RESPECTIVE COMPANIES AND ARE NOT AFFILIATED IN ANY WAY WITH MIDWEST TRUCK & AUTO PARTS, INC.® MOTIVE GEAR® AND WORLD AMERICAN® ARE THE REGISTERED TRADEMARKS OF MIDWEST TRUCK & AUTO PARTS, INC.® USE OF THE ® IN CONNECTION WITH A MARK OF MIDWEST TRUCK & AUTO PARTS, INC.® INDICATES THAT THE MARK IS REGISTERED IN AT LEAST THE UNITED STATES. NO REPRESENTATION IS MADE WITH RESPECT TO THE SOURCE OF MANUFACTURE OF ANY PARTICULAR PART. © 2005, MIDWEST TRUCK & AUTO PARTS, INC.® ALL RIGHTS RESERVED.

# EATON®

MODELS: RS341, RS402, RS451, RS381, RS401, RS340, RS380, RS400, 34RS, 38RS (Cont'd)

ITEM NO.	PART NAME	QTY PER AXLE	RS341, RS402, RS451 BUILT AFTER 4/6/89	RS341, RS381, RS401, RS402, RS451 BUILT BEFORE 4/6/89	RS340, RS380, RS400	34RS 38RS
20	RING GEAR NUT & BOLT KIT (1/2")	1	-----	-----	-----	69957
	Bolt	16	-----	-----	-----	69117
	Nut	16	-----	-----	-----	67592
21	Pinion Pilot Bearing	1	MUSB7307UM	MUS1307UM	MUS1307UM	MUS1307UM
22	Pinion Bearing Cone (Inner)	1	72218C	55200C	55200C	55200C
	Pinion Bearing Cone (Outer)	1	55200C	55200C	55200C	55200C
23	Pinion Bearing Spacer	AR		<b>CALL YOUR SALES REP</b>		
24	Pinion Bearing Cage & Cup Assy					
	Includes Item 25					
	Ratios 3.55 & 3.70	1	127039	75108	75108	-----
	Cage (NSS)		127038	75107	75107	-----
	Ratios 3.08, 3.25, 3.36, 3.90-7.17	1	107496	75110	75110	-----
	Cage (NSS)		107495	75109	75109	-----
	34/38RSB, C	1	-----	-----	-----	75108
	34/38RRD, E		-----	-----	-----	75110
25	Pinion Bearing Cup (Inner)	1	72487	55437	55437	55437
	Pinion Bearing Cup (Outer)	1	55437	55437	55437	55437
	OIL SEAL & SHIM KIT	1	213763	213764	213764	213764
	Includes Items 26, 28 & RTV					
26	Pinion Bearing Cage Shim	AR				
	.003"		107567	43588	43588	43588
	.005"		107568	107568	107568	107568
	.010"		107569	43589	43589	43589
	.020"		107570	107570	107570	107570
	.030"		-----	43590	43590	43590
27	Bearing Cage Capscrew	6	113325	113325	113325	113325
28	Pinion Seal	1	475012N	475012N	475012N	475012N
29	Pinion Yoke			<b>CALL YOUR SALES REP</b>		
30	Pinion Nut	1	95206	95206	95206	-----
	Ratio 3.70-4.33 (1-31/32" Spline)	1	-----	-----	-----	95206
	4.33-7.17 (1-3/4" Spline)	1	-----	-----	-----	95205
31	Flat Washer	1	56864	56864	56864	4327
	Gasket Compound	AR	107276	107276	107276	107276

NSS = Not Sold Separately

<b>REAR AXLES AFTER 4/6/89 RS401, 402, 451 LONG PINION SHAFT</b>		
RATIO	PART#	TEETH COUNT
3.36	217996	(37-11)
3.55	217997	(39-11)
3.70	217998	(37-10)
3.90	217999	(39-10)
4.11	218000	(37-9)
4.33	218001	(39-9)
4.56	218002	(41-9)
4.88	218003	(39-8)
5.29	218004	(37-7)
5.57	218005	(39-7)
6.14	218006	(43-7)
6.50	218007	(39-6)
7.17	218008	(43-6)

INCLUDES PINION YOKE  
SPACER 129169

<b>REAR AXLES BEFORE 4/6/89 RS341, 381, 401</b>		
RATIO	PART#	TEETH COUNT
3.36	120763	(37-11)
3.55	111501	(39-11)
3.70	111502	(37-10)
3.90	111503	(39-10)
4.11	111504	(37-9)
4.33	111505	(39-9)
4.56	111506	(41-9)
4.88	111507	(39-8)
5.29	111508	(37-7)
5.57	111509	(39-7)
6.14	111510	(43-7)
6.50	111511	(39-6)
7.17	111512	(43-6)

PARTS LISTED IN THIS CATALOG ARE NOT NECESSARILY MANUFACTURED BY THE ORIGINAL EQUIPMENT MANUFACTURER AND ANY REFERENCE TO THE TRADEMARKS OR PART NUMBERS OF OTHERS ARE FOR CROSS REFERENCE INFORMATIONAL PURPOSES ONLY. THE TRADEMARKS OF OTHERS REFERRED TO HEREIN ARE OWNED BY THEIR RESPECTIVE COMPANIES AND ARE NOT AFFILIATED IN ANY WAY WITH MIDWEST TRUCK & AUTO PARTS, INC.® MOTIVE GEAR® AND WORLD AMERICAN® ARE THE REGISTERED TRADEMARKS OF MIDWEST TRUCK & AUTO PARTS, INC.® USE OF THE ® IN CONNECTION WITH A MARK OF MIDWEST TRUCK & AUTO PARTS, INC.® INDICATES THAT THE MARK IS REGISTERED IN AT LEAST THE UNITED STATES. NO REPRESENTATION IS MADE WITH RESPECT TO THE SOURCE OF MANUFACTURE OF ANY PARTICULAR PART. © 2005, MIDWEST TRUCK & AUTO PARTS, INC.® ALL RIGHTS RESERVED.