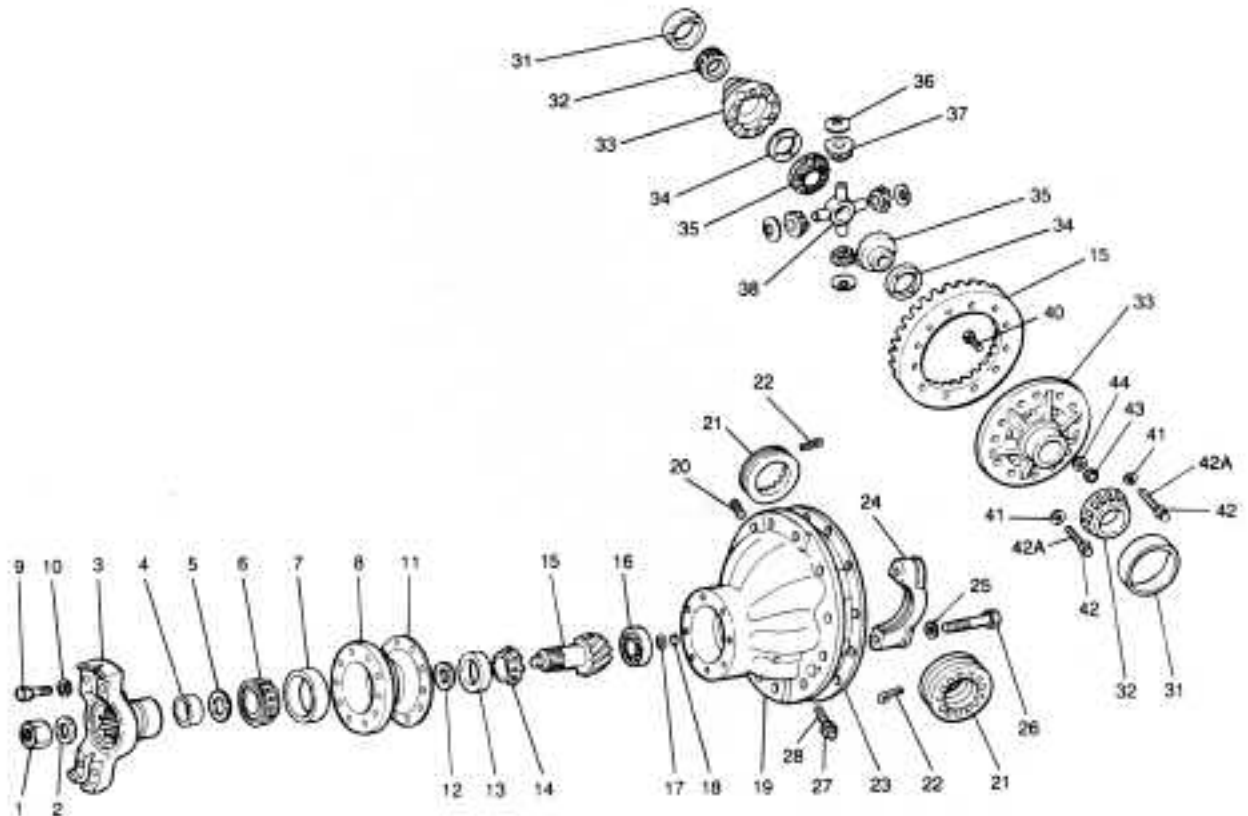


ROCKWELL®

SHR, THR, UHR REAR



PARTS LISTED IN THIS CATALOG ARE NOT NECESSARILY MANUFACTURED BY THE ORIGINAL EQUIPMENT MANUFACTURER AND ANY REFERENCE TO THE TRADEMARKS OR PART NUMBERS OF OTHERS ARE FOR CROSS REFERENCE INFORMATIONAL PURPOSES ONLY. THE TRADEMARKS OF OTHERS REFERRED TO HEREIN ARE OWNED BY THEIR RESPECTIVE COMPANIES AND ARE NOT AFFILIATED IN ANY WAY WITH MIDWEST TRUCK & AUTO PARTS, INC.® MOTIVE GEAR® AND WORLD AMERICAN® ARE THE REGISTERED TRADEMARKS OF MIDWEST TRUCK & AUTO PARTS, INC.® USE OF THE ® IN CONNECTION WITH A MARK OF MIDWEST TRUCK & AUTO PARTS, INC.® INDICATES THAT THE MARK IS REGISTERED IN AT LEAST THE UNITED STATES. NO REPRESENTATION IS MADE WITH RESPECT TO THE SOURCE OF MANUFACTURE OF ANY PARTICULAR PART. © 2005, MIDWEST TRUCK & AUTO PARTS, INC.® ALL RIGHTS RESERVED.

ROCKWELL®

SHR, THR, UHR - REAR

ITEM	DESCRIPTION	QTY	CARRIER 3200-H-606 PART NUMBER DATE 1/74	CARRIER 3200-C-1433 PART NUMBER DATE 1/83	REMARKS
	Bearing, Seal & Gasket Kit		RA172RR		
1	Nut-drive pinion	1	1227J946	1227J946	
2	Washer-drive pinion nut	1	1229T1736	1229T1736	
3	Yoke/flange-input	1			CALL YOUR SALES REP
4	Oil seal-yoke flange	1	476283N	4876N	
5	Thrust washer-bearing	1	1229E1071	1229E1071	
6	Bearing cone-outer	1	H715334	H715334	
7	Bearing cup-outer	1	H715311	H715311	
8	Cage & cup assy. - drive pinion	1	A3226T878	A3226L896	
9	Capscrew - bearing cage	8	S2813-1	S2813-1	
10	Washer - bearing cage capscrew	8	1229C1511	1229C1511	
11	Shim-pinion .003	1	2203L1260	2203L1260	
	bearing cage .005	1	2203A469	2203A469	
	.010	3	2203B470	2203B470	
12	Spacers - drive pinion	2			CALL YOUR SALES REP
13	Bearing cup - inner	1	H715311	H715311	
14	Bearing cone - inner	1	H715343	H715343	
15	Drive gear & pinion assy.	1			See Page 130
16	Rear bearing - drive pinion	1	MU1308UM	MU1308UM	Roller bearing
17	Retainer - rear bearing	1	1199Z1430	1199Z1430	
18	Lock ring - rear bearing	1	1229U1113	1229U1113	
19	Carrier & cap assy.	1	A2-3200C1433	A2-3200C1433	
20	Plug-carrier filler	1	P212	P212	
21	Adj. ring differential bearing	2	2214X50	2214X50	L.H. & R.H.
22	Cotter-bearing adj. ring	2	1199M2457	1199M2457	
23	Gasket - carrier to housing (Silastic)	3 oz.	1199T3842	1199T3842	
24~	Bearing cap - differential	--	--	--	Part of Item 19
25	Washer - differential bearing cap	4	1229T1554	1229T1554	
26	Bolt - differential bearing cap	4	S21444-1	S-21444-1	
27	Nut-thrust screw	1	13X41	13X41	
28	Screw-thrust	1	15X1025	15X1025	
31	Bearing cup - differential	2	47820	47820	L.H. & R.H.
32	Bearing cone - differential	2	47890	47890	L.H. & R.H.
33~, 41, 42, 42A	Diff. case assy. - case only	1	A32-3235N1106	A3235N1678	Standard ratios
		1	A39-3235Q1109	A3235Q1681	Fast ratios
33~ thru 38, 41, 42, 42A	Diff. case & nest assy. (for axles using 2-1/4" - 23 spline	1	A4-3235N1106	A3-3235N1678	Standard ratios
		1	A6-3235Q1109	A3-3235Q1681	Fast ratios
33~ thru 38, 41, 42, 42A	Diff. case & nest assy. (for axles using 2-3/8" - 24 spline	1	A1-3235N1106	A1-3235N1678	Standard ratios
		1	A1-3235Q1109	A1-3235Q1681	Fast ratios
34	Thrust washer - side gear	2	1229E993	1229E993	SEE KITS 327, 347, 348, & 383
35	Side gear 23 Spline	2	2234K271	2234K271	KITS 327 & 347
	differential 24 Spline	2	2234F344	2234F344	KITS 348 & 383
36	Thrust washer - diff. pinion	4	1229D992	1229D992	KITS 327 or 383 with
37	Pinion - differential	4	2233U99	2233U99	spider. KITS 347 or 348
38	Spider - differential	1	3278A79	3278A79	3278A79 less spider
39	Rivet - gear to case	12	RV71016	RV71016	
40	Bolt - gear to case	12	15X1474	15X1474	SEE KIT 948
41	Washer - diff. case	12	1229U1503	1229U1503	SEE KIT 948
42	Bolt - diff. case Short	4	S21020A-1	S21020A-1	
	Long	8	S21028A-1	S21028A-1	
42A	Thread locking liquid/diff. case	1	2297C3747	2297C3747	.34 oz. tube - SEE NOTE NEXT PAGE
43	Nut-gear to case	12	NL110-1	NL110-1	SEE KIT 948
44	Washer - gear to case	12	1229U1503	1229U1503	

~ - Not serviced separately.

PARTS LISTED IN THIS CATALOG ARE NOT NECESSARILY MANUFACTURED BY THE ORIGINAL EQUIPMENT MANUFACTURER AND ANY REFERENCE TO THE TRADEMARKS OR PART NUMBERS OF OTHERS ARE FOR CROSS REFERENCE INFORMATIONAL PURPOSES ONLY. THE TRADEMARKS OF OTHERS REFERRED TO HEREIN ARE OWNED BY THEIR RESPECTIVE COMPANIES AND ARE NOT AFFILIATED IN ANY WAY WITH MIDWEST TRUCK & AUTO PARTS, INC.® MOTIVE GEAR® AND WORLD AMERICAN® ARE THE REGISTERED TRADEMARKS OF MIDWEST TRUCK & AUTO PARTS, INC.® USE OF THE ® IN CONNECTION WITH A MARK OF MIDWEST TRUCK & AUTO PARTS, INC.® INDICATES THAT THE MARK IS REGISTERED IN AT LEAST THE UNITED STATES. NO REPRESENTATION IS MADE WITH RESPECT TO THE SOURCE OF MANUFACTURE OF ANY PARTICULAR PART. © 2005, MIDWEST TRUCK & AUTO PARTS, INC.® ALL RIGHTS RESERVED.

ROCKWELL®

SHR, THR, UHR (Cont'd)

NOTE: THREAD LOCKING LIQUID/DIFFERENTIAL CASE HALVES

When assembling differential case halves in Rockwell International® axles, a thread locking adhesive should be used. The recommended procedure is as follows:

1. Wipe excess oil and residue from the threaded holes in the case. The holes should be relatively oil-free.
2. If **new bolts** are used, a yellow coating of Dri-Loc™ should appear on the threads. Assemble the case with these coated bolts to the required torque.
3. If the **original bolts** are reused or **regular bolts** without Dri-Loc™ are used, Rockwell® Part No. 2297C3747 should be used as a thread locking adhesive. **Apply the adhesive to the differential case holes only.** Thread the bolts and tighten to the required torque.

IMPORTANT: Do not apply Rockwell® Part No. 2297C3747 to Dri-Loc™ coated bolts. Refer to Rockwell® Service.

SSHD (ALL MODELS REAR-REAR WITH 2" - 39 SPLINE)

PART NUMBER	RATIO		AXLE
	FAST	STANDARD	
A40504-1	FAST	3.73	ALL MODELS REAR-REAR SHR,THR&UHR
A40534-1		3.90	
A40536-1		4.10	
A40542-1		4.30	
A40074-1		4.56	
A40544-1		4.63	
A40546-1	STANDARD	4.89	
A40674-1		5.29	
A40088-1		5.38	
A40676-1		5.57	
A40678-1		6.14	
A40680-1		6.83	
A40682-1		7.40	

SSHD (ALL MODELS REAR-REAR WITH 1-31/32" - 10 SPLINE)

PART NUMBER	RATIO		AXLE
	FAST	STANDARD	
A40536-3	FAST	4.11	ALL MODELS REAR-REAR SHR, THR & UHR
A40542-3		4.33	
A40544-3		4.63	
A40546-3	STANDARD	4.89	
A40674-6		5.29	
A40676-3		5.57	
A40678-3		6.17	
A40680-6		6.83	
A40682-5		7.40	

PARTS LISTED IN THIS CATALOG ARE NOT NECESSARILY MANUFACTURED BY THE ORIGINAL EQUIPMENT MANUFACTURER AND ANY REFERENCE TO THE TRADEMARKS OR PART NUMBERS OF OTHERS ARE FOR CROSS REFERENCE INFORMATIONAL PURPOSES ONLY. THE TRADEMARKS OF OTHERS REFERRED TO HEREIN ARE OWNED BY THEIR RESPECTIVE COMPANIES AND ARE NOT AFFILIATED IN ANY WAY WITH MIDWEST TRUCK & AUTO PARTS, INC.® MOTIVE GEAR® AND WORLD AMERICAN® ARE THE REGISTERED TRADEMARKS OF MIDWEST TRUCK & AUTO PARTS, INC.® USE OF THE ® IN CONNECTION WITH A MARK OF MIDWEST TRUCK & AUTO PARTS, INC.® INDICATES THAT THE MARK IS REGISTERED IN AT LEAST THE UNITED STATES. NO REPRESENTATION IS MADE WITH RESPECT TO THE SOURCE OF MANUFACTURE OF ANY PARTICULAR PART. © 2005, MIDWEST TRUCK & AUTO PARTS, INC.® ALL RIGHTS RESERVED.