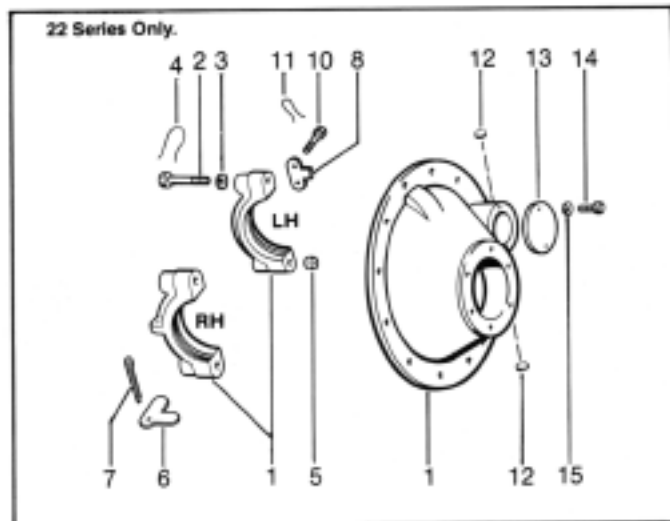
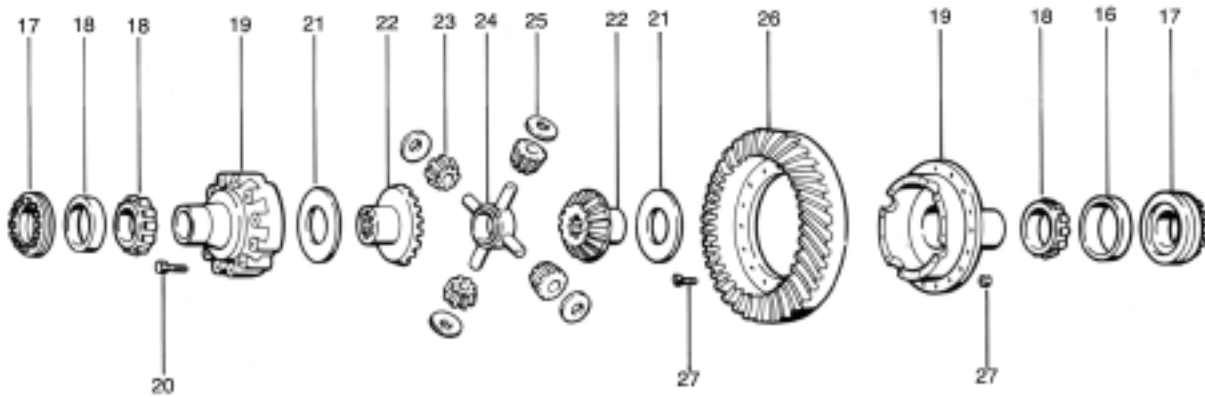
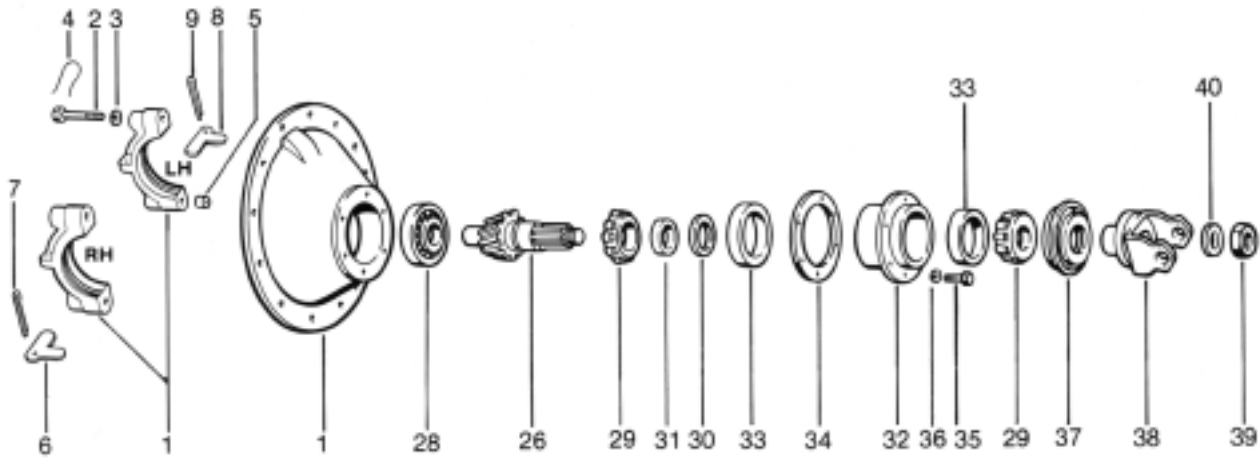


# EATON®

## SINGLE AXLE DIFFERENTIAL - SINGLE REDUCTION 17, 18101, 21, 22, 23-26121



PARTS LISTED IN THIS CATALOG ARE NOT NECESSARILY MANUFACTURED BY THE ORIGINAL EQUIPMENT MANUFACTURER AND ANY REFERENCE TO THE TRADEMARKS OR PART NUMBERS OF OTHERS ARE FOR CROSS REFERENCE INFORMATIONAL PURPOSES ONLY. THE TRADEMARKS OF OTHERS REFERRED TO HEREIN ARE OWNED BY THEIR RESPECTIVE COMPANIES AND ARE NOT AFFILIATED IN ANY WAY WITH MIDWEST TRUCK & AUTO PARTS, INC.® MOTIVE GEAR® AND WORLD AMERICAN® ARE THE REGISTERED TRADEMARKS OF MIDWEST TRUCK & AUTO PARTS, INC.® USE OF THE ® IN CONNECTION WITH A MARK OF MIDWEST TRUCK & AUTO PARTS, INC.® INDICATES THAT THE MARK IS REGISTERED IN AT LEAST THE UNITED STATES. NO REPRESENTATION IS MADE WITH RESPECT TO THE SOURCE OF MANUFACTURE OF ANY PARTICULAR PART. © 2005, MIDWEST TRUCK & AUTO PARTS, INC.® ALL RIGHTS RESERVED.



SINGLE AXLE DIFFERENTIAL - SINGLE REDUCTION

ITEM NO.	PART NAME	QTY PER AXLE	17101-21	18101-21	23121
			21121	22121	26121
	<b>Bearing, Seal &amp; Gasket Kit</b>	1	RA1AR	110634	RA18ER
1	Diff. Carrier & Bearing Caps Carrier Casting No. (NSS) 67804 (Includes Items 1-4) 109364 (Includes Items 1-5, 12-13 plus (2) 20807 Capscrews and (2) 90415 lockwashers). 98593 (Includes Items 1-5)	1	67804 106402	109364 107493	98593 98493
2	Bearing Capscrew	4	67811	32732	32732
3	Flat Washer	4	26772	32912	31912
4	Lockwire	4	90538	-----	12563
	Lockwire	2	-----	90538	-----
	Lockwire	2	-----	12563	-----
5	Dowel Bushing	2	-----	32730	32730
6	Bearing Cap Adjuster Lock (RH)	1	13377	13377	14275
7	Cotter Pin (RH)	1	90873	90873	90876
8	Bearing Cap Adjuster Lock (LH)	1	14275	45448	14275
9	Cotter Pin (LH)	1	90876	-----	90876
10	Capscrew (LH)	2	-----	12562	-----
11	Lockwire	1	-----	-----	-----
12	Upper Expansion Plug	1	-----	30703	-----
	Lower Expansion Plug	1	-----	9797	-----
13	Shift Fork Opening Cover	1	-----	45521	-----
14	Stud/Screw	2	-----	119863	-----
15	Flat Washer	2	-----	119857	-----
17	Diff. Bearing Adjuster (RH) 17, 21 Series 18 Series	1	----- 110243 27842	----- ----- -----	----- ----- -----
	Diff. Bearing Adjuster (LH) (106694 includes 90943 Cup)	1	31562	106694	39448
16	Diff. Bearing Cup (RH)	1	493	493	42584
	Diff. Bearing Cup (LH)	1	563	563	653
18	Diff. Bearing Cone (RH)	1	467	497	42381
	Diff. Bearing Cone (LH)	1	567	567	665
	WHEEL DIFF. CASE KIT (Includes Items 19-20) To service axles with 88678 case: 1/2" Bolt 5/8" Bolt	1 1 1	----- 96794 94799	----- ----- -----	----- ----- -----
	To service axles with 110138 case: Ratios 3.36-5.29 Ratios 5.57-7.17 (Above kits include 110243 adjuster)	1 1 1	106397 94799	106397 94799	----- ----- -----
	Ratios 3.55-4.11 Ratios 4.33-6.67	1 1	----- -----	----- -----	98610 98611
19	Diff. Case (Plain Half) (NSS)	1	110138	110138	86777
	Diff. Case (Flanged Half) (NSS)	1	-----	-----	-----
	1/2" Bolt	1	91114	-----	-----
	5/8" Bolt	1	88677	-----	-----
	Ratios 3.36-5.29	1	193865	193865	-----
	Ratios 5.57-7.17	1	88677	88677	-----
	Ratios 3.55-4.11	1	-----	-----	88501
	Ratios 4.33-6.67	1	-----	-----	88776
20	Diff. Case Capscrew	12	96271	96271	88503
	WHEEL DIFF. KIT (Contains Items 21-25 including required side gear)	1	-----	114470	114472
	17 Series	1	114469	-----	-----
	18, 21 Series	1	114470	-----	-----

NSS = Not Sold Separately

PARTS LISTED IN THIS CATALOG ARE NOT NECESSARILY MANUFACTURED BY THE ORIGINAL EQUIPMENT MANUFACTURER AND ANY REFERENCE TO THE TRADEMARKS OR PART NUMBERS OF OTHERS ARE FOR CROSS REFERENCE INFORMATIONAL PURPOSES ONLY. THE TRADEMARKS OF OTHERS REFERRED TO HEREIN ARE OWNED BY THEIR RESPECTIVE COMPANIES AND ARE NOT AFFILIATED IN ANY WAY WITH MIDWEST TRUCK & AUTO PARTS, INC. MOTIVE GEAR® AND WORLD AMERICAN® ARE THE REGISTERED TRADEMARKS OF MIDWEST TRUCK & AUTO PARTS, INC. USE OF THE ® IN CONNECTION WITH A MARK OF MIDWEST TRUCK & AUTO PARTS, INC. INDICATES THAT THE MARK IS REGISTERED IN AT LEAST THE UNITED STATES. NO REPRESENTATION IS MADE WITH RESPECT TO THE SOURCE OF MANUFACTURE OF ANY PARTICULAR PART. © 2005, MIDWEST TRUCK & AUTO PARTS, INC. ALL RIGHTS RESERVED.

# EATON®

## SINGLE AXLE DIFFERENTIAL - SINGLE REDUCTION (Cont'd)

ITEM NO.	PART NAME	QTY PER AXLE	17101-21 18101-21 21121	22121	23121 26121
21	Side Gear Thrust Washer	2	27827	27827	27274
	WHEEL DIFF. KIT LESS SIDE GEARS (Includes Items 21, 23-25)	1	118748	118748	118749
22	Diff. Side Gear				
	Straight Splines	2	37072	37069	-----
	Involute Splines	2	-----	110527	-----
	17 Series	2	110525	-----	-----
	18 & 21 Splines	2	110527	-----	-----
	Involute Splines 22	2	-----	-----	86784
	Involute Splines 36	2	-----	-----	93401
23	Side Pinion	4	104139	104139	86780
24	Spider	1	38289	38289	86778
25	Side Pinion Thrust Washer	4	27810	27810	86781
26	RING GEAR & DRIVE PINION SET (NSS)	1			
	<b>MATCHED PARTS: (SEE SEPARATE LISTING ON PAGE 38)</b>				
27	RING GEAR BOLT & NUT KIT				
	1/2" Fasteners	1	69957	-----	-----
	Bolts	16	69117	-----	-----
	Nuts	16	67592	-----	-----
	5/8" Fasteners	1	70745	70745	70745
	Bolts	16	110686	110686	110686
	Nuts	16	60606	60600	60600
	For use with 5/8" drive gear and 1/2" diff. case holes	1	120780	-----	-----
	Bolts	16	119865	-----	-----
	Nuts	16	67592	-----	-----
28	Pinion Pilot Bearing	1	MUS1307UM	MUS1307UM	MUS1308UM
29	Pinion Bearing Cone (Inner)	1	55200C	72200C	78215C
	Pinion Bearing Cone (Outer)	1	55200C	55200C	72212C
30	Pinion Bearing Spacer	AR			
31	Pinion Bearing Spacer Washer	1	-----	-----	31366
32	Pinion Bearing Cage & Cup Assy (Includes Item 33)	1			
	Ratios 3.55-3.70 (Cage 75107)	1	75108	-----	-----
	Other Ratios (Cage 75109)	1	75110	-----	-----
	(Cage 107495)	1	-----	107496	-----
	(Cage 79245)	1	-----	-----	79246
33	Pinion Bearing Cup (Inner)	1	55437	72487	78551
	Pinion Bearing Cup (Outer)	1	55437	55437	72487
	OIL SEAL & SHIM KITS (Includes Items 34 & 37 & Sealant)	1	114165	115551	115581
34	Pinion Bearing Cage Shims	AR			
	.003"		43588	107567	67920
	.005"		61993	107568	67921
	.010"		43589	107569	67922
	.020"		61994	107570	67923
35	Bearing Cage Capscrew	6	113325	113325	113327
36	Lockwasher	6	-----	-----	90422
37	Oil Seal & Retainer Assy.	1	119427	119427	119432
38	Input Yoke	1	-----	-----	-----
	<b>CALL YOUR SALES REP</b>				
39	Pinion Nut	1	-----	95206	95262
	Ratios 3.55-4.33	1	95206	-----	-----
	Ratios 4.56-7.17	1	95205	-----	-----
40	Flat Washer	1	-----	56864	-----
	(With #95206 Nut)	1	56864	-----	-----
	(With #95205 Nut)	1	4327	-----	-----
	Gasket Compound	1	107276	107276	107276

**NSS = Not Sold Separately**

PARTS LISTED IN THIS CATALOG ARE NOT NECESSARILY MANUFACTURED BY THE ORIGINAL EQUIPMENT MANUFACTURER AND ANY REFERENCE TO THE TRADEMARKS OR PART NUMBERS OF OTHERS ARE FOR CROSS REFERENCE INFORMATIONAL PURPOSES ONLY. THE TRADEMARKS OF OTHERS REFERRED TO HEREIN ARE OWNED BY THEIR RESPECTIVE COMPANIES AND ARE NOT AFFILIATED IN ANY WAY WITH MIDWEST TRUCK & AUTO PARTS, INC.® MOTIVE GEAR® AND WORLD AMERICAN® ARE THE REGISTERED TRADEMARKS OF MIDWEST TRUCK & AUTO PARTS, INC.® USE OF THE ® IN CONNECTION WITH A MARK OF MIDWEST TRUCK & AUTO PARTS, INC.® INDICATES THAT THE MARK IS REGISTERED IN AT LEAST THE UNITED STATES. NO REPRESENTATION IS MADE WITH RESPECT TO THE SOURCE OF MANUFACTURE OF ANY PARTICULAR PART. © 2005, MIDWEST TRUCK & AUTO PARTS, INC.® ALL RIGHTS RESERVED.

### RING GEAR & PINION KITS

**MODEL 17101, 18101  
GEAR: 16" WITH 5/8" BOLT**

GEAR RATIO	GEAR SET	TEETH COUNT
3.70	96619	(37-10)
4.11	95520	(37-9)
4.33	96621	(39-9)
4.33	99930	(39-9)

**(SERVICE FOR 1-3/4" DIA.  
PINION SPLINE)**

4.56	96622	(41-9)
4.88	96623	(39-9)
5.29	96624	(37-7)
5.57	96625	(39-7)

**MODEL 17121, 18121  
GEAR: 16 -1/2" WITH 5/8" BOLT**

GEAR RATIO	GEAR SET	TEETH COUNT
5.57	96626	(39-7)
6.14	96627	(43-7)
6.57	113466	(46-7)
7.17	119239	(43-6)

**MODEL 21121  
GEAR: 3.36-3.70 16";  
OTHERS 16-1/2"**

GEAR RATIO	GEAR SET	TEETH COUNT
3.36	120763	(37-11)
3.55	111501	(39-11)
3.70	111502	(37-10)
3.90	111503	(39-10)
4.11	111504	(37-9)
4.33	111505	(39-9)
4.56	111506	(41-9)
4.88	111507	(39-8)
5.29	111508	(37-7)
5.57	111509	(39-7)
6.14	111510	(43-7)
6.50	111511	(39-6)
7.17	111512	(43-6)

**MODEL 22121  
GEAR: 17"**

GEAR RATIO	GEAR SET	TEETH COUNT
3.90	107537	(39-10)
4.11	107538	(37-9)
4.33	107539	(39-9)
4.62	107540	(37-8)
4.88	107541	(39-8)
5.29	107542	(37-7)
5.57	107543	(39-7)
6.17	107544	(37-6)
6.50	107545	(39-6)
7.17	107546	(43-6)

**All gear sets with 1/2" bolts have been superseded to current product 5/8" bolt gear sets. When making replacements, a nut and bolt kit P/N 120780 must be used.**

**When replacing 16" gears with 16-1/2" gear sets, cage and cup 75110 is also required.**

**MODEL 23121, 26121 (LATE)  
GEAR: 18"**

GEAR RATIO	GEAR SET	TEETH COUNT
3.55	111352	(39-11)
3.70	98264	(37-10)
3.90	99899	(39-10)
4.11	98265	(37-9)
4.33	98101	(39-9)
4.56	98102	(41-9)
4.88	98103	(39-8)
5.43	98104	(38-7)
6.17	98105	(37-6)
6.67	98106	(40-6)

PARTS LISTED IN THIS CATALOG ARE NOT NECESSARILY MANUFACTURED BY THE ORIGINAL EQUIPMENT MANUFACTURER AND ANY REFERENCE TO THE TRADEMARKS OR PART NUMBERS OF OTHERS ARE FOR CROSS REFERENCE INFORMATIONAL PURPOSES ONLY. THE TRADEMARKS OF OTHERS REFERRED TO HEREIN ARE OWNED BY THEIR RESPECTIVE COMPANIES AND ARE NOT AFFILIATED IN ANY WAY WITH MIDWEST TRUCK & AUTO PARTS, INC.® MOTIVE GEAR® AND WORLD AMERICAN® ARE THE REGISTERED TRADEMARKS OF MIDWEST TRUCK & AUTO PARTS, INC.® USE OF THE ® IN CONNECTION WITH A MARK OF MIDWEST TRUCK & AUTO PARTS, INC.® INDICATES THAT THE MARK IS REGISTERED IN AT LEAST THE UNITED STATES. NO REPRESENTATION IS MADE WITH RESPECT TO THE SOURCE OF MANUFACTURE OF ANY PARTICULAR PART. © 2005, MIDWEST TRUCK & AUTO PARTS, INC.® ALL RIGHTS RESERVED.