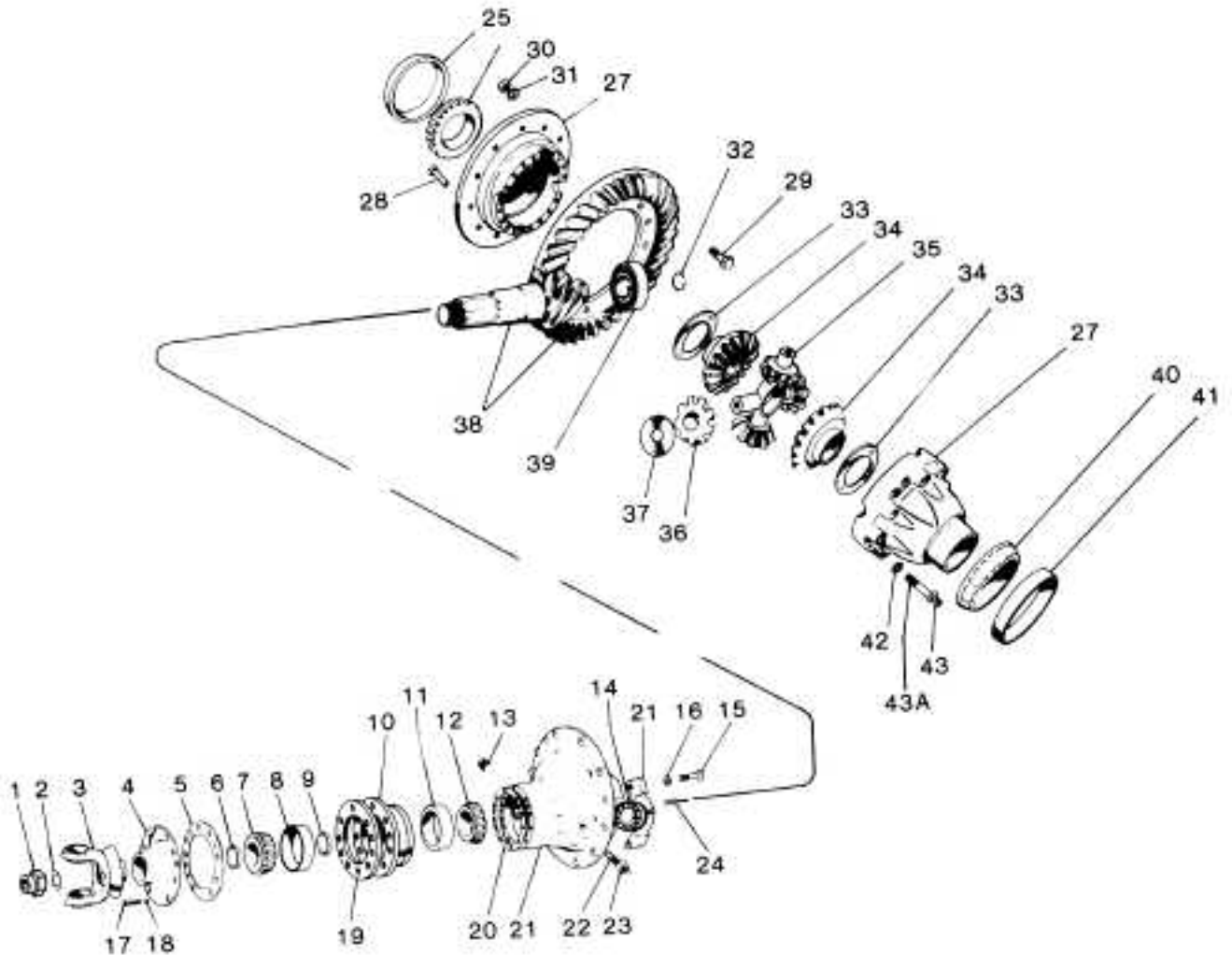


ROCKWELL®

SL/SQHD REAR-REAR



REAR DIFFERENTIAL
CARRIER ASSEMBLY

PARTS LISTED IN THIS CATALOG ARE NOT NECESSARILY MANUFACTURED BY THE ORIGINAL EQUIPMENT MANUFACTURER AND ANY REFERENCE TO THE TRADEMARKS OR PART NUMBERS OF OTHERS ARE FOR CROSS REFERENCE INFORMATIONAL PURPOSES ONLY. THE TRADEMARKS OF OTHERS REFERRED TO HEREIN ARE OWNED BY THEIR RESPECTIVE COMPANIES AND ARE NOT AFFILIATED IN ANY WAY WITH MIDWEST TRUCK & AUTO PARTS, INC.® MOTIVE GEAR® AND WORLD AMERICAN® ARE THE REGISTERED TRADEMARKS OF MIDWEST TRUCK & AUTO PARTS, INC.® USE OF THE ® IN CONNECTION WITH A MARK OF MIDWEST TRUCK & AUTO PARTS, INC.® INDICATES THAT THE MARK IS REGISTERED IN AT LEAST THE UNITED STATES. NO REPRESENTATION IS MADE WITH RESPECT TO THE SOURCE OF MANUFACTURE OF ANY PARTICULAR PART. © 2005, MIDWEST TRUCK & AUTO PARTS, INC.® ALL RIGHTS RESERVED.

ROCKWELL®

SL/SQHD REAR-REAR

ITEM	DESCRIPTION	QTY	PART NO.	REMARKS
	Bearing, Seal & Gasket Kit		RA9RCR	
1	Nut - Yoke Input	1	1227Z936	
2	Washer - Yoke Input	1	1229A2653	
3	Companion Yoke & Slinger Assy.	1		CALL YOUR SALES REP
4, 6	Cage-cover & Seal Assy.	1	A3266H86	
5	Gasket - Bearing Cage	1	2208E421	
6	Oil Seal Assy.	1	475009N	
7	Cone - Outer Bearing	1	72188C	
8	Cup - Outer Bearing	1	72487	
9	Spacer - Bearing	As req.		CALL YOUR SALES REP
8, 10, 11	Bearing - Cage & Cup Assy.	1	A3226Z78	
11	Cup - Inner Bearing	1	72487	
12	Cone - Inner Bearing	1	72200C	
13	Plug - Inspection Hole	1	P212	
14	Adjusting ring - Differential Bearing	2	2214G215	
15	Capscrew - differential bearing cap	4	S21238-1	Malleable carriers
		4	10X1021	Aluminum carriers
16	Washer - Diff. bearing cap	4	1229V1556	
17	Capscrew - Cage	8	S2813-1	Malleable carriers
		8	10X720	Aluminum carriers
18	Washer - Cage Capscrew	8	1229C1511	
19	Shim	1	2203L7448	
		3	2203K7447	
		4	2203J7446	
20	Shim	As req.	2203T8366	Use with these ratios only: 4.88, 6.17, 6.83, 7.20, 7.80, 8.60
15, 16, 21~	Carrier & Cap Assy.	1	A2-3200C393 No longer available	Malleable Aluminum
22	Thrust Screw	1	15X1025	
23	Nut - Thrust Screw	1	13X41	
24	Lock pin-adjusting ring	2	1199R2176	
25	Cup - differential bearing - L.H.	1	493	Standard & fast ratios
26	Cone - differential bearing - L.H.	1	496	Standard & fast ratios
		1	497	Fast ratios only
27, 33, 34, 35, 36, 37, 42, 43	Differential Case & Nest Assy.	1	B11-3235U619 #	Standard ratios
		1	A87-3235V620 #	Fast ratios
		1	B5-3235U619 ##	Standard ratios
		1	A84-3235V620 ##	Fast ratios
27, 42, 43	Differential Case Assy.	1	B3-3235U619	Standard ratios
		1	A83-3235V620	Fast ratios
28	Rivet- gear to case (riveted version)	12	RV71013	
29	Bolt- gear to case (bolted version)		15X1523	Available as KIT 570
30	Nut - gear to case	12	NL110-1	Available as KIT 570
31	Washer - gear to case	12	1229U1503	Available as KIT 570
32	Lock Ring - Drive Pinion	1	1229A1301	
33	Washer - Side Gear Thrust	2	1229T1034	
34	Side Gear - Differential	2	2234X310 #	KIT 317 - SLHD - 21 SPL. (Incl. 33-37)
		2	2234X700 ##	KIT 318 - SQHD - 22 SPL. (Incl. 33-37)
35	Spider - Differential	1	3278S305	
36	Pinion - Differential	4	2233U151	
37	Washer - Pinion Thrust	4	1229R1032	
38	Drive Gear & Pinion Assy.	1	See Page 108	
39	Rear Bearing - Drive Pinion	1	1228F552	
40	Cone - Differential Bearing - R.H.	1	496	Standard & fast ratios
41	Cup - Differential Bearing - R.H.	1	493	Standard & fast ratios
42	Washer - Diff. Case Bolt	16	1229C1511	
43	Bolt I- Differential Case	15	S2826P-1	
43A	Thread locking liquid/diff. case	1	2297C3747	.34 oz. tube

~ = Not serviced separately.

= SLHD Only

= SQHD Only

PARTS LISTED IN THIS CATALOG ARE NOT NECESSARILY MANUFACTURED BY THE ORIGINAL EQUIPMENT MANUFACTURER AND ANY REFERENCE TO THE TRADEMARKS OR PART NUMBERS OF OTHERS ARE FOR CROSS REFERENCE INFORMATIONAL PURPOSES ONLY. THE TRADEMARKS OF OTHERS REFERRED TO HEREIN ARE OWNED BY THEIR RESPECTIVE COMPANIES AND ARE NOT AFFILIATED IN ANY WAY WITH MIDWEST TRUCK & AUTO PARTS, INC.® MOTIVE GEAR® AND WORLD AMERICAN® ARE THE REGISTERED TRADEMARKS OF MIDWEST TRUCK & AUTO PARTS, INC.® USE OF THE ® IN CONNECTION WITH A MARK OF MIDWEST TRUCK & AUTO PARTS, INC.® INDICATES THAT THE MARK IS REGISTERED IN AT LEAST THE UNITED STATES. NO REPRESENTATION IS MADE WITH RESPECT TO THE SOURCE OF MANUFACTURE OF ANY PARTICULAR PART. © 2005, MIDWEST TRUCK & AUTO PARTS, INC.® ALL RIGHTS RESERVED.

ROCKWELL®

SL/SQHD REAR-REAR CARRIER WITH 1-3/4" - 10 SPLINE

PART NUMBER	RATIO		REMARKS
A36028-18	FAST	3.55	Use Differential Case Assembly A83-3235V620
A37588-10		3.70	
A38006-3		3.90	
A35818-20		4.11	
A36722-10		4.33	
A35816-17		4.44	
A35814-14		4.63	
A36446-13	STANDARD	4.88	Use Differential Case Assembly B3-3235U619
A35812-18		5.29	
A35810-17		5.83	
A35808-19		6.17	
A35806-19		6.83	
A35804-19		7.20	
A35802-15		7.80	
A35800-14	8.60		

PARTS LISTED IN THIS CATALOG ARE NOT NECESSARILY MANUFACTURED BY THE ORIGINAL EQUIPMENT MANUFACTURER AND ANY REFERENCE TO THE TRADEMARKS OR PART NUMBERS OF OTHERS ARE FOR CROSS REFERENCE INFORMATIONAL PURPOSES ONLY. THE TRADEMARKS OF OTHERS REFERRED TO HEREIN ARE OWNED BY THEIR RESPECTIVE COMPANIES AND ARE NOT AFFILIATED IN ANY WAY WITH MIDWEST TRUCK & AUTO PARTS, INC.® MOTIVE GEAR® AND WORLD AMERICAN® ARE THE REGISTERED TRADEMARKS OF MIDWEST TRUCK & AUTO PARTS, INC.® USE OF THE ® IN CONNECTION WITH A MARK OF MIDWEST TRUCK & AUTO PARTS, INC.® INDICATES THAT THE MARK IS REGISTERED IN AT LEAST THE UNITED STATES. NO REPRESENTATION IS MADE WITH RESPECT TO THE SOURCE OF MANUFACTURE OF ANY PARTICULAR PART. © 2005, MIDWEST TRUCK & AUTO PARTS, INC.® ALL RIGHTS RESERVED.