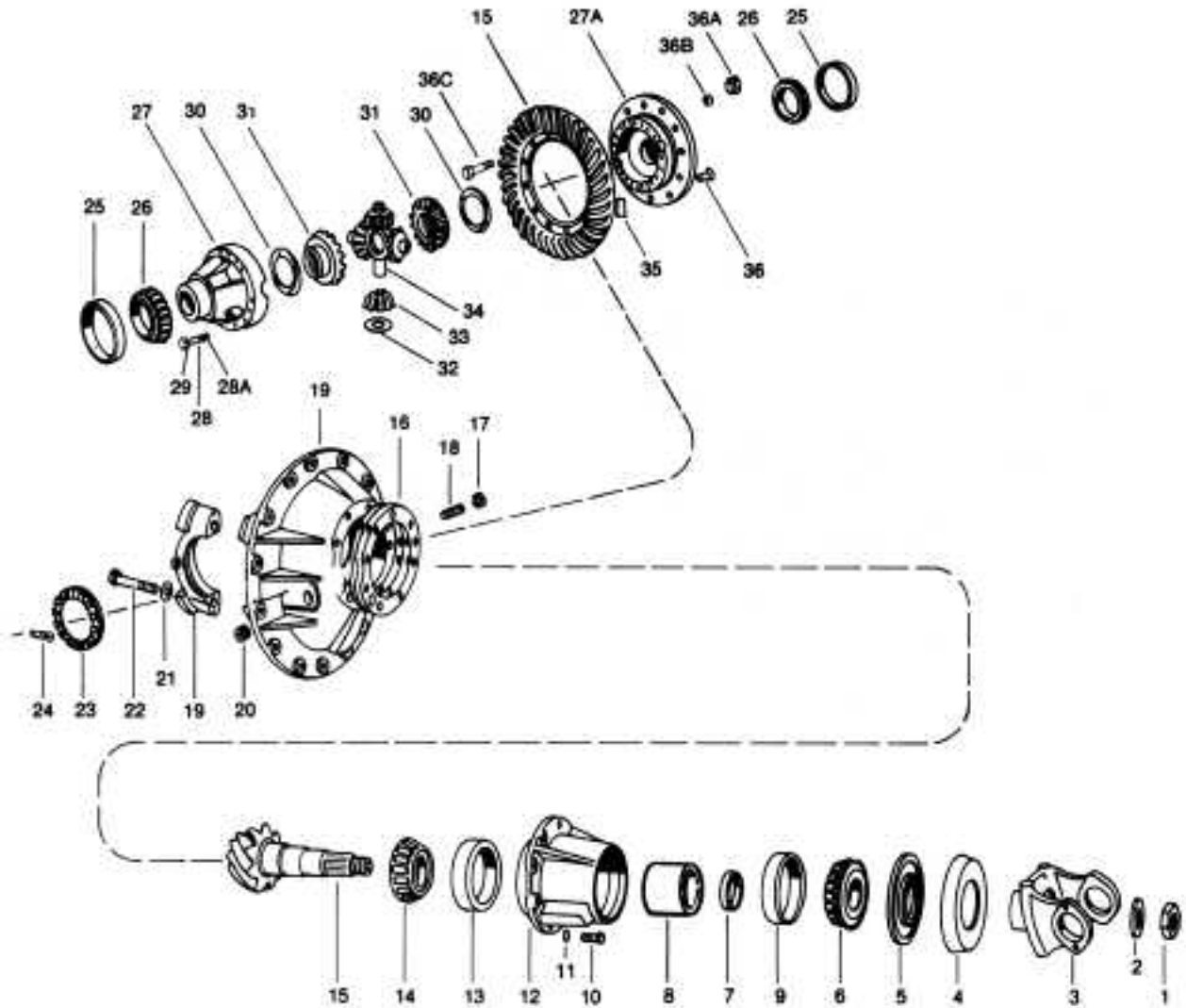


# ROCKWELL®

## SQHP/REAR/QAR



### REAR DIFFERENTIAL CARRIER ASSEMBLY

PARTS LISTED IN THIS CATALOG ARE NOT NECESSARILY MANUFACTURED BY THE ORIGINAL EQUIPMENT MANUFACTURER AND ANY REFERENCE TO THE TRADEMARKS OR PART NUMBERS OF OTHERS ARE FOR CROSS REFERENCE INFORMATIONAL PURPOSES ONLY. THE TRADEMARKS OF OTHERS REFERRED TO HEREIN ARE OWNED BY THEIR RESPECTIVE COMPANIES AND ARE NOT AFFILIATED IN ANY WAY WITH MIDWEST TRUCK & AUTO PARTS, INC.® MOTIVE GEAR® AND WORLD AMERICAN® ARE THE REGISTERED TRADEMARKS OF MIDWEST TRUCK & AUTO PARTS, INC.® USE OF THE ® IN CONNECTION WITH A MARK OF MIDWEST TRUCK & AUTO PARTS, INC.® INDICATES THAT THE MARK IS REGISTERED IN AT LEAST THE UNITED STATES. NO REPRESENTATION IS MADE WITH RESPECT TO THE SOURCE OF MANUFACTURE OF ANY PARTICULAR PART. © 2005, MIDWEST TRUCK & AUTO PARTS, INC.® ALL RIGHTS RESERVED.

# ROCKWELL®

## SQHP/REAR/QAR

ITEM	DESCRIPTION	QTY	PART NO.	REMARKS	
	<b>Bearing, Seal &amp; Gasket Kit</b>		RA194R		
1	Nut - drive pinion	1	1227R902		
2	Washer - drive pinion	1	1229F2918		
3, 4	Yoke/flange input	1		<b>CALL YOUR SALES REP</b>	
4	Deflector-yoke input	1	DEFR50-7		
5	Oil Seal - yoke flange	1	3905 4562V	Pre 8/83 Triple lip seal	
6	Cone - Outer bearing	1	72225C		
7	Spacer - pinion bearing	As req.		<b>CALL YOUR SALES REP</b>	
8	Sleeve - pinion bearing	1	1244F1592		
9	Cup - Outer bearing	1	72487		
10	Capscrew - bearing cage	8	S2812-2 15X1558	Aluminum carrier	
11	Washer - bearing cage	8	1229C1511		
12, 13	Drive pinion cage & cup assy.	1	A3226W569		
13	Cup - inner bearing	1	65500		
14	Cone - inner bearing	1	65237		
15~	* Drive gear & pinion assy.	1	<b>See Page 120</b>		
16	Shim - pinion	.003 .005 .010	1 3 4	2203C8115 2203D8116 2203E8117	Available as KIT 1568.
17	Nut - thrust block adj. screw	1	13X41		
18	Adj. screw - thrust block	1	10X382		
19, 20	Differential carrier & cap assy.	1	A2-3200Y1039		
21	Use with KIT 533 (Silastic)		A2-3200N1080	Aluminum carrier	
19A	Adhesive - bearing cup	1	2297T4180	Not shown - 2-.5 cc tubes	
20	Plug - filler	1	P212		
21	Washer - diff. bearing cap	4	1229V1556		
22	Capscrew - diff. bearing cap	4	S21238-1 10X1023	Aluminum carrier	
23	Adj. ring-diff. bearing	2	2214Z208		
24	Cotter - diff. bearing adj. ring	2	1199R2176		
25	Cup - diff. bearing	2	JM716610		
26	Cone - diff. bearing	2	JM716649		
27~, 27A~, 28, 29	* Differential case assembly	1	A28-3235D1174 A26-3235L1156 A19-3235C1173	Standard ratios Medium ratios Fast ratios	
27~, 27A~, 28, 29, 30, 31, 32, 33, 34	* Diff. case & nest assy.	1	A18-3235D1174 A17-3235L1156 A13-3235C1173	Standard ratios Medium ratios Fast ratios	
28	Capscrew - Diff. case	16	S2826P-1	Available in KIT 2467	
28A	Thread locking liquid/diff. case	1	2297C3747	.34 oz. tube - <b>SEE NOTE, next page.</b>	
29	Washer - Diff. case	16	1229C1511		
30	Thrust washer - side gear	2	1229T1034		
31	Side gear - diff.	2	2234C783		
32	Thrust washer - diff. pinion	4	1229R1032		
33	Pinion - diff.	4	2233U151		
34	Spider - diff.	1	3278S305		
35	Thrust block - Drive gear	1	2297Q563		
36	Rivet - gear to case	12	RV71013		
36A	Bolt - gear to case	12	15X1523	Available as KIT 570	
36B	Washer - gear to case	12	1229U1503	Available as KIT 570	
36C	Nut - gear to case	12	NL110-1	Available as KIT 570	

~ = Not serviced separately.

\* = Specify ratios. When changing ratios from standard to medium or fast, you must change differential cases.

PARTS LISTED IN THIS CATALOG ARE NOT NECESSARILY MANUFACTURED BY THE ORIGINAL EQUIPMENT MANUFACTURER AND ANY REFERENCE TO THE TRADEMARKS OR PART NUMBERS OF OTHERS ARE FOR CROSS REFERENCE INFORMATIONAL PURPOSES ONLY. THE TRADEMARKS OF OTHERS REFERRED TO HEREIN ARE OWNED BY THEIR RESPECTIVE COMPANIES AND ARE NOT AFFILIATED IN ANY WAY WITH MIDWEST TRUCK & AUTO PARTS, INC.® MOTIVE GEAR® AND WORLD AMERICAN® ARE THE REGISTERED TRADEMARKS OF MIDWEST TRUCK & AUTO PARTS, INC.® USE OF THE ® IN CONNECTION WITH A MARK OF MIDWEST TRUCK & AUTO PARTS, INC.® INDICATES THAT THE MARK IS REGISTERED IN AT LEAST THE UNITED STATES. NO REPRESENTATION IS MADE WITH RESPECT TO THE SOURCE OF MANUFACTURE OF ANY PARTICULAR PART. © 2005, MIDWEST TRUCK & AUTO PARTS, INC.® ALL RIGHTS RESERVED.

# ROCKWELL®

## SQHP/REAR/QAR (Cont'd)

### NOTE: THREAD LOCKING LIQUID/DIFFERENTIAL CASE HALVES

When assembling differential case halves in Rockwell International® axles, a thread locking adhesive should be used. The recommended procedure is as follows:

1. Wipe excess oil and residue from the threaded holes in the case. The holes should be relatively oil-free.
2. If **new bolts** are used, a yellow coating of Dri-Loc™ should appear on the threads. Assemble the case with these coated bolts to the required torque.
3. If the **original bolts** are reused or **regular bolts** without Dri-Loc™ are used, Rockwell® Part No. 2297C3747 should be used as a thread locking adhesive. **Apply the adhesive to the differential case holes only.** Thread the bolts and tighten to the required torque.

IMPORTANT: Do not apply Rockwell® Part No. 2297C3747 to Dri-Loc™ coated bolts. Refer to Rockwell® Service.

## SQHP/REAR/QAR

PART NUMBER	RATIO		AXLE
A37594-3	FAST	3.55	QAR/SQHP REAR-REAR
A37598-3 *		3.70 *	
A39166-1 *		3.73 *	
A38000-3		3.90	
A38758-1	MEDIUM	4.10	
A37542-3		4.33	
A37532-3		4.44	
A37534-3		4.63	
A37544-3	STANDARD	4.88	
A37536-3		5.29	
A38826-1		6.14	
A38246-1		6.83	

\* = Non-interchangeable. 3.70 or 3.73 ratios must be the same for both Forward-Rear and Rear-Rear axle ratios. (i.e. 3.73 Forward-Rear and 3.73 Rear-Rear).

PARTS LISTED IN THIS CATALOG ARE NOT NECESSARILY MANUFACTURED BY THE ORIGINAL EQUIPMENT MANUFACTURER AND ANY REFERENCE TO THE TRADEMARKS OR PART NUMBERS OF OTHERS ARE FOR CROSS REFERENCE INFORMATIONAL PURPOSES ONLY. THE TRADEMARKS OF OTHERS REFERRED TO HEREIN ARE OWNED BY THEIR RESPECTIVE COMPANIES AND ARE NOT AFFILIATED IN ANY WAY WITH MIDWEST TRUCK & AUTO PARTS, INC.® MOTIVE GEAR® AND WORLD AMERICAN® ARE THE REGISTERED TRADEMARKS OF MIDWEST TRUCK & AUTO PARTS, INC.® USE OF THE ® IN CONNECTION WITH A MARK OF MIDWEST TRUCK & AUTO PARTS, INC.® INDICATES THAT THE MARK IS REGISTERED IN AT LEAST THE UNITED STATES. NO REPRESENTATION IS MADE WITH RESPECT TO THE SOURCE OF MANUFACTURE OF ANY PARTICULAR PART. © 2005, MIDWEST TRUCK & AUTO PARTS, INC.® ALL RIGHTS RESERVED.