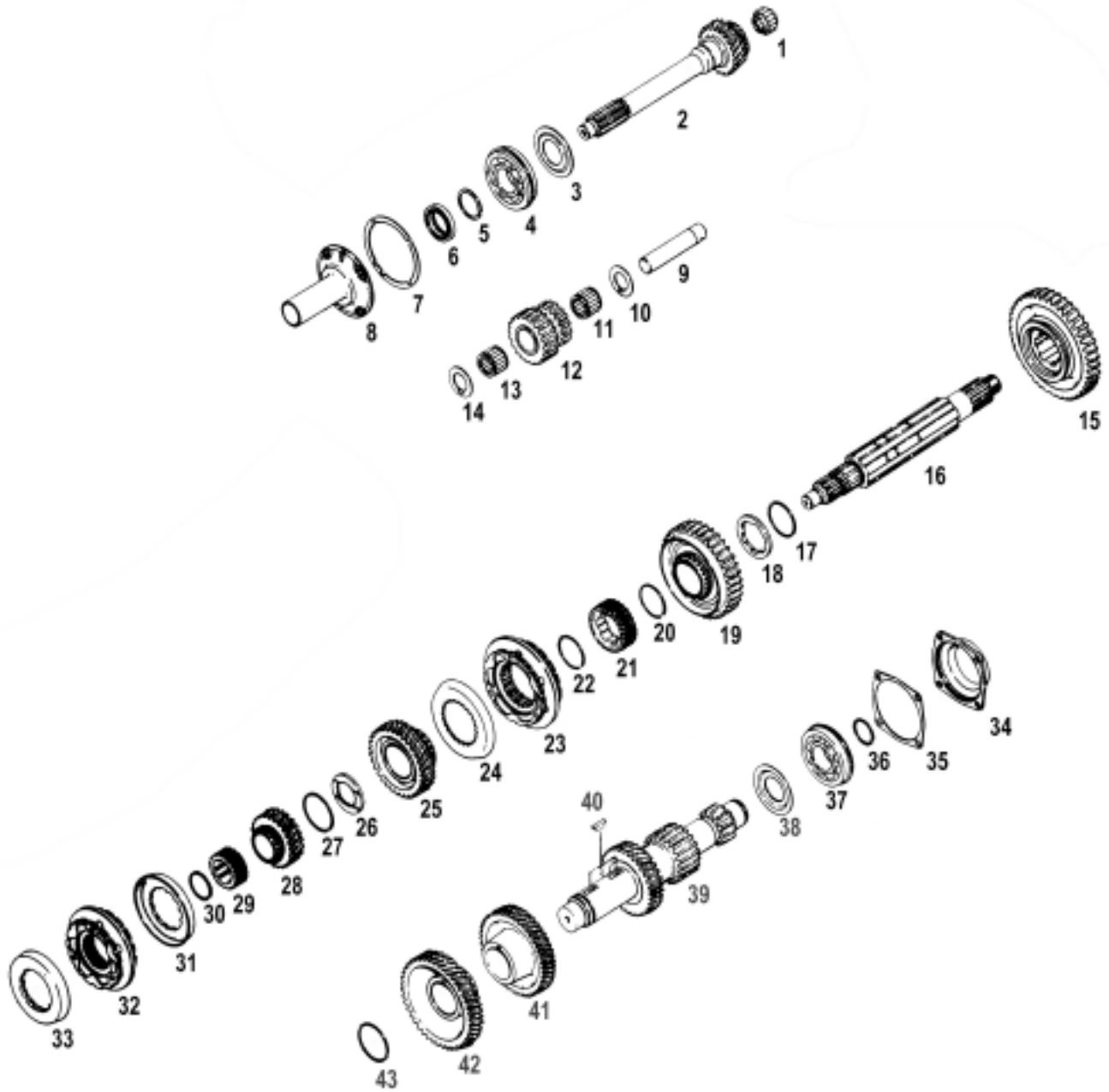


# 280 - 282 - 285 - 380VO



PARTS LISTED IN THIS CATALOG ARE NOT NECESSARILY MANUFACTURED BY THE ORIGINAL EQUIPMENT MANUFACTURER AND ANY REFERENCE TO THE TRADEMARKS OR PART NUMBERS OF OTHERS ARE FOR CROSS REFERENCE INFORMATIONAL PURPOSES ONLY. THE TRADEMARKS OF OTHERS REFERRED TO HEREIN ARE OWNED BY THEIR RESPECTIVE COMPANIES AND ARE NOT AFFILIATED IN ANY WAY WITH MIDWEST TRUCK AND AUTO PARTS, INC.™ MOTIVE GEAR® AND WORLD AMERICAN® ARE THE REGISTERED TRADEMARKS OF MIDWEST TRUCK AND AUTO PARTS, INC.™ NO REPRESENTATION IS MADE WITH RESPECT TO THE SOURCE OF MANUFACTURE OF ANY PARTICULAR PART. © 2005, MIDWEST TRUCK AND AUTO PARTS, INC.™ ALL RIGHTS RESERVED.

# EATON/FULLER® 280 - 282 - 285 - 280VO

FIGURE	DESCRIPTION	OEM#	WORLD AMERICAN #
1	BEARING	227081	FC65454
2	MAIN DRIVE GEAR (24-25T)	230209	WT305-16
	MAIN DRIVE GEAR (22-25T)	228340	WT305-16A
	MAIN DRIVE GEAR (22-25T)	230207	WT305-16F
	MAIN DRIVE GEAR (22-25T)	233200	WT305-16G
	MAIN DRIVE GEAR (22-25T)	228341	228341
	MAIN DRIVE GEAR (22-25T)	237511	237511
	MAIN DRIVE GEAR (25-21T)	238036	238036
	MAIN DRIVE GEAR (25-21T)	237742	237742
	MAIN DRIVE GEAR (25-22T)	238058	238058
	MAIN DRIVE GEAR (24T)	228605	WT327-16K
3	OIL BAFFLE	235419	235419
4	BEARING	227080	N309L
5	RETAINING RING	224069	224069
6	OIL SEAL	229366	239366
7	SHIM KIT	K2135	K2135
8	F.B.RETAINER	230211	WT305-6C
	F.B.RETAINER	229456	WT305-6
9	REVERSE SHAFT	203609	WT215-35B
10	WASHER	240023	240023
11	BEARING	201989	F54970
12	REVERSE IDLER GEAR (20-15T)	228581	WT305-10
13	BEARING	201989	F54970
14	WASHER	240023	240023
15	M/S 1ST GEAR (41T)	228578	WT305-12
16	MAINSHAFT	228289	WT305-2
17	SNAP RING	230706	230706
18	WASHER	228310	228310
19	M/S 2ND GEAR (38T)	228726	WT305-31
21	SLEEVE	228307	WT305-81
22	SNAP RING	230706	230706
23	2/3 SYNCHRONIZER	229230	AWT305-80
	2/3 SYNCHRONIZER	237053	AWT305-80
24	2/3 SYNCHRONIZER CUP	228306	WT305-83
25	M/S 3RD GEAR (35T) 285	238200	WT305-18
	M/S 3RD GEAR (34T) 282	238202	WT305-18A
26	WASHER	228301	228301
27	RETAINER RING	224069	224069
28	M/S 4TH GEAR (28T) 285	238199	WT305-11
	M/S 4TH GEAR (24T) 282	238201	WT305-11A
	M/S 4TH GEAR (21T) 280VO	228346	WT305-11B
29	SLEEVE	228297	WT305-2.5
30	SNAP RING	224031	224031
31	4/5 SYNCHRONIZER CUP	228296	WT305-14
32	4/5 SYNCHRONIZER	229229	AWT305-2.5
	4/5 SYNCHRONIZER	237054	AWT305-2.5
33	4/5 SYNCHRONIZER CUP	228296	WT305-14
34	C/S BEARING CUP	235128	235128
35	GASKET	228287	228287
36	RETAINING RING	224069	224069
37	BEARING	227080	N309L
38	OIL BAFFLE	235419	235419
39	COUNTERSHAFT (32-19-12T)	228580	WT305-3
40	C/S KEY	230292	230292
41	C/S 4TH GEAR (39T) 285	238198	WT305-44
	C/S 4TH GEAR (42T) 282	228314	WT305-44B
42	C/S 5TH GEAR (45T) 282/285	228313	WT305-9
	C/S 5TH GEAR (42T) 280VO	228343	WT305-9A
	C/S 5TH GEAR (46T)	237739	237739
43	SNAP RING	224024	224024
44	BEARING (BCE 2816)	228285	BCE816
N/A	NUT	222960	222960
N/A	SMALL PARTS KIT (K2137)	802112	SP305-50
N/A	GASKET KIT (K2136)	802110	GS305-55
N/A	BEARING KIT (K2127)	K-2127	T148R

PARTS LISTED IN THIS CATALOG ARE NOT NECESSARILY MANUFACTURED BY THE ORIGINAL EQUIPMENT MANUFACTURER AND ANY REFERENCE TO THE TRADEMARKS OR PART NUMBERS OF OTHERS ARE FOR CROSS REFERENCE INFORMATIONAL PURPOSES ONLY. THE TRADEMARKS OF OTHERS REFERRED TO HEREIN ARE OWNED BY THEIR RESPECTIVE COMPANIES AND ARE NOT AFFILIATED IN ANY WAY WITH MIDWEST TRUCK AND AUTO PARTS, INC.™ MOTIVE GEAR® AND WORLD AMERICAN® ARE THE REGISTERED TRADEMARKS OF MIDWEST TRUCK AND AUTO PARTS, INC.™ NO REPRESENTATION IS MADE WITH RESPECT TO THE SOURCE OF MANUFACTURE OF ANY PARTICULAR PART. © 2005, MIDWEST TRUCK AND AUTO PARTS, INC.™ ALL RIGHTS RESERVED.