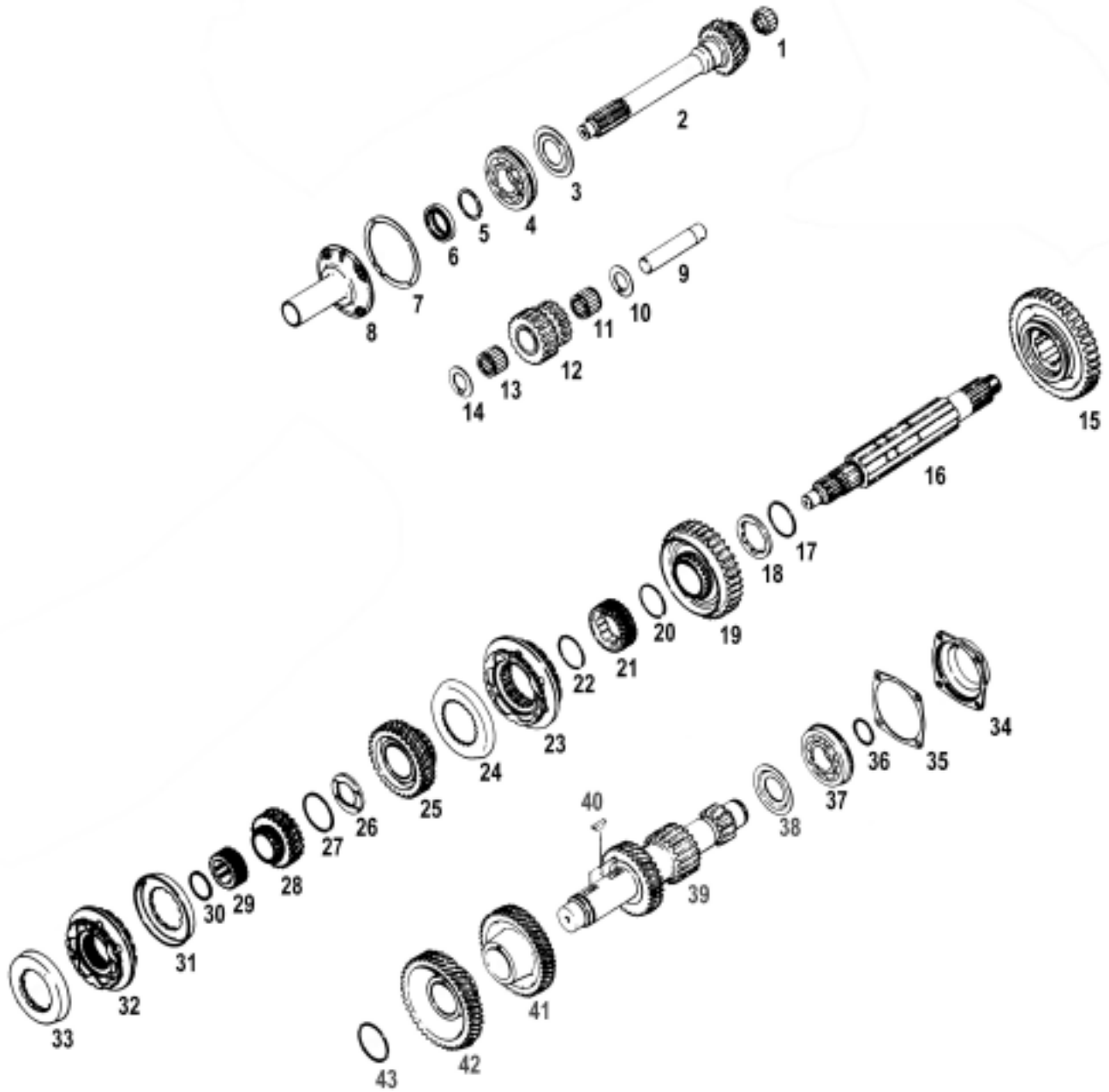


EATON/FULLER® 262 - 265

FIGURE	DESCRIPTION	OEM NO.	WORLD AMERICAN #
1	SYNCHRONIZER 4TH & 5TH	220255	AWT263-2.5B
2	BEARING	227081	FC65454
3	MAIN DRIVE GEAR	220256	WT263-16A
	MAIN DRIVE GEAR	227079	WT273-16D
	MAIN DRIVE GEAR	2601272	WT273-16ES
	MAIN DRIVE GEAR	2601278	WT263-16ES
4	BEARING	223724	223724
5	SNAP RING	224075	224075
6	SNAP RING	201751	201751
7	SNAP RING	239614	239614
8	M/D GEAR RETAINER	227078	263-6
9	WASHER	221015	22015
10	SNAP RING	224070	224075
11	SYNCHRONIZER 2ND & 3RD	228121	AWT263-2.5
12	M/S 3RD GEAR	220279	WT263-34A
	M/S 3RD GEAR	220280	WT263-34
13	WASHER	227082	227082
14	BUSHING	209839	WT263-19
15	M/S 4TH GEAR	220522	WT273-15
	M/S 4TH GEAR	220278	WT263-15A
16	WASHER	223677	223677
	WASHER	223678	223678
	WASHER	223678	223678
17	SNAP RING	224069	224069
18	M/S 1ST GEAR	220270	WT263-12
19	MAINSHAFT	227075	WT263-2B
	MAINSHAFT	222959	WT263-2A
	MAINSHAFT	206952	WT263-2
	MAINSHAFT	227360	WT263-2C
20	M/S 2ND GEAR	228119	WT263-31
21	IDLER SHAFT REV	203609	WT215-35B
22	BEARING	201989	F54970
23	BUSHING	206975	206975
24	BEARING	201989	F54970
25	IDLER REVERSE GEAR	215803	WT263-10C
26	COUNTERSHAFT	219399	WT263-3B
27	C/S KEY	5J-1010	5J-1010
28	C/S 3RD GEAR	220273	WT263-11A
29	C/S 3RD GEAR	219409	WT263-11J
	C/S 4TH GEAR	220252	WT273-34
	C/S 4TH GEAR	220272	WT265-31D
30	C/S DRIVE GEAR	220271	WT215-8
	C/S DRIVE GEAR	220253	WT273-9
31	WASHER	224026	224026
32	BEARING	228285	BCE2816
N.A	STEEL BALL	J1010	J10-10
N/A	SMALL PARTS KIT		
N/A	GASKET KIT		

PARTS LISTED IN THIS CATALOG ARE NOT NECESSARILY MANUFACTURED BY THE ORIGINAL EQUIPMENT MANUFACTURER AND ANY REFERENCE TO THE TRADEMARKS OR PART NUMBERS OF OTHERS ARE FOR CROSS REFERENCE INFORMATIONAL PURPOSES ONLY. THE TRADEMARKS OF OTHERS REFERRED TO HEREIN ARE OWNED BY THEIR RESPECTIVE COMPANIES AND ARE NOT AFFILIATED IN ANY WAY WITH MIDWEST TRUCK AND AUTO PARTS, INC.™ MOTIVE GEAR® AND WORLD AMERICAN® ARE THE REGISTERED TRADEMARKS OF MIDWEST TRUCK AND AUTO PARTS, INC.™ NO REPRESENTATION IS MADE WITH RESPECT TO THE SOURCE OF MANUFACTURE OF ANY PARTICULAR PART. © 2005, MIDWEST TRUCK AND AUTO PARTS, INC.™ ALL RIGHTS RESERVED.

280 - 282 - 285 - 380VO



PARTS LISTED IN THIS CATALOG ARE NOT NECESSARILY MANUFACTURED BY THE ORIGINAL EQUIPMENT MANUFACTURER AND ANY REFERENCE TO THE TRADEMARKS OR PART NUMBERS OF OTHERS ARE FOR CROSS REFERENCE INFORMATIONAL PURPOSES ONLY. THE TRADEMARKS OF OTHERS REFERRED TO HEREIN ARE OWNED BY THEIR RESPECTIVE COMPANIES AND ARE NOT AFFILIATED IN ANY WAY WITH MIDWEST TRUCK AND AUTO PARTS, INC.™ MOTIVE GEAR® AND WORLD AMERICAN® ARE THE REGISTERED TRADEMARKS OF MIDWEST TRUCK AND AUTO PARTS, INC.™ NO REPRESENTATION IS MADE WITH RESPECT TO THE SOURCE OF MANUFACTURE OF ANY PARTICULAR PART. © 2005, MIDWEST TRUCK AND AUTO PARTS, INC.™ ALL RIGHTS RESERVED.